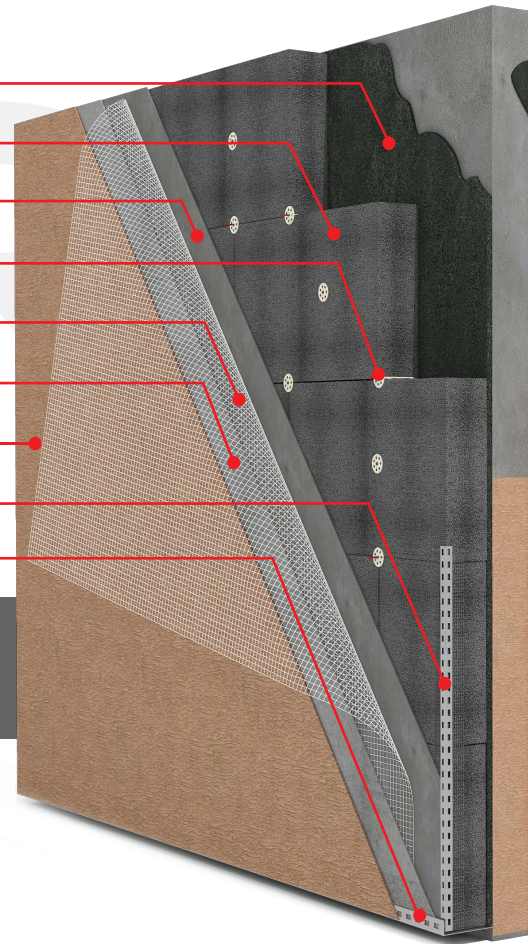




- Adhesive Coat
- STYRO Graypor
- Base Coat
- Fasteners
- Glass Fiber Mesh
- Base Coat
- Finishing
- Corner Beads
- Base Profile



EIFS EXTERIOR INSULATION FINISHING SYSTEM

External Insulation Finishing System (EIFS) is a lightweight industrial wall insulator that includes STYRO Graypor as an insulation layer and thin synthetic coatings with fiber reinforcement.

STYRO Graypor is an energy-efficient, cost-effective, innovative Expanded Polystyrene insulation product commonly used as the base material in the (EIFS).



Graypor Features

- Lightweight
- Easy to apply
- Fire Retardant
- High impact resistance
- Good insulator with long term R-value
- Prevents cracks due to expansion
- Good dimensional stability
- Good elastic properties
- CFC, HCFC free
- Eco-friendly
- Recyclable

Recommended Products:

- STYRO Graypor 220



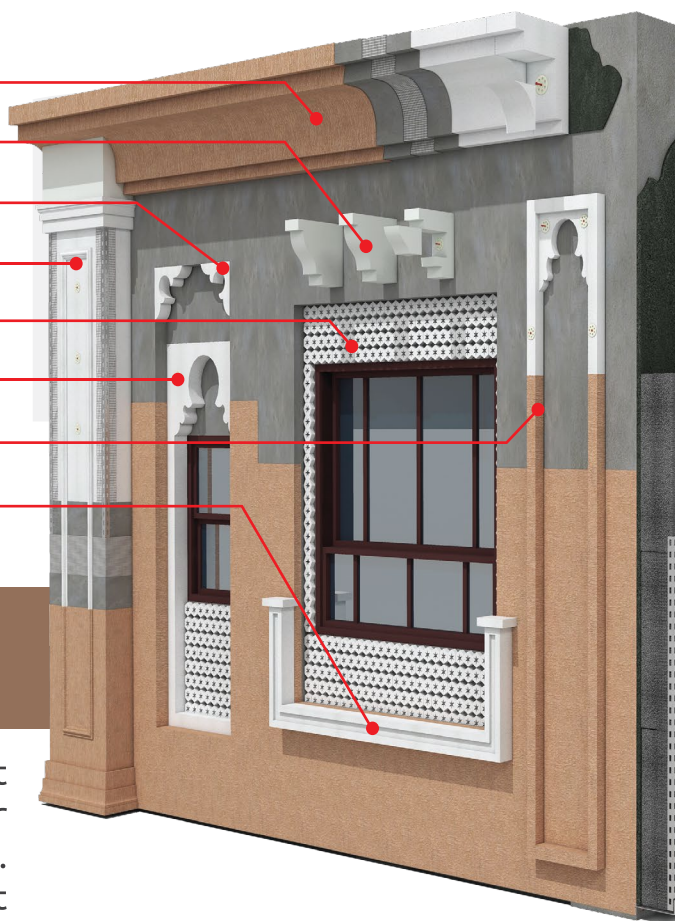
🏠 P.O.Box: 29272, Sharjah UAE.
☎ +9716-5344504

🏠 P.O.Box: 9108, Abu Dhabi, UAE.
☎ +9712-5513688

✉ info@styrouae.com
🌐 www.styrouae.com

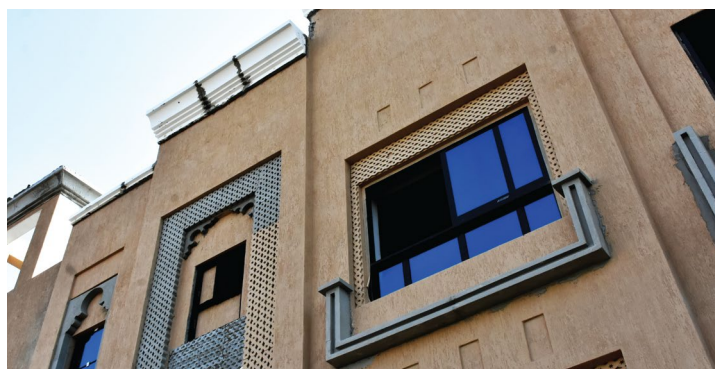


- STYRO Cornice
- STYRO Corbels
- STYRO Decorative Corners
- STYRO Decorative Column
- STYRO Lattice
- STYRO Window Surrounds
- STYRO Arch & Borders
- STYRO Window Sills



EDFS EXTERIOR DECORATION FINISHING SYSTEM

STYRO Decoration Finishing System is a smart alternative in the building decoration industry for being lightweight and simple to install on-site. STYRO continually offers customized lightweight facade solutions for all interfaces. It is designed to achieve aesthetic factors and integrate with the building's essential elements incredibly.



Features

- Lightweight
- Easy to apply
- Fire Retardant
- High impact resistance
- Unlimited shapes and designs
- Prevents cracks due to expansion
- Good dimensional stability
- Good elastic properties
- CFC, HCFC free
- Eco-friendly

Recommended Products:

- STYRO 220
- STYRO 380



🏠 P.O.Box: 29272, Sharjah UAE.
☎ +9716-5344504

🏠 P.O.Box: 9108, Abu Dhabi, UAE.
☎ +9712-5513688

✉ info@styrouae.com
🌐 www.styrouae.com