



 **Styro**  
EXPANDED POLYSTYRENE SOLUTIONS



# STYRO IS CIVIL DEFENSE APPROVED

**Because safety is our top priority**

## CONTENTS

<b>Introduction</b>	<b>02</b>	<b>STYRO Applications</b>	<b>27</b>
Vision	03	STYRO Retrofitting	27
Mission	03	STYRO Insulation	28
Teamwork	03	STYRO Decorative Cladding	30
<b>Class A Fire Retardant</b>	<b>04</b>	STYRO Geofoam	31
<b>Civil Defense Approved</b>	<b>05</b>	STYRO Void Formers	32
<b>Green Thinking</b>	<b>06</b>	STYRO Void Fill	33
<b>STYRO Certification</b>	<b>08</b>	STYRO Pipe Insulation	34
<b>Features of Expanded Polystyrene</b>	<b>09</b>	STYRO Pontoons & Buoys	35
<b>Manufacturing Process</b>	<b>10</b>	STYRO Piling Cylinders & Guide Walls	36
<b>STYRO Business Model</b>	<b>11</b>	STYRO Beads for Lightweight Concrete	37
<b>STYRO Products</b>	<b>12</b>	<b>STYRO Packing</b>	<b>38</b>
STYRO EPS	12	STYRO Customized Packaging	38
STYRO EPS Physical Properties	13	STYRO Packing Materials	39
STYRO Graypor	14	<b>STYRO Creative &amp; Technical Services</b>	<b>40</b>
STYRO Graypor Physical Properties	15	<b>STYRO Trading Products</b>	<b>42</b>
<b>STYRO Systems</b>	<b>16</b>	STYRO SSS Glue	42
STYRO EIFS (EI) Exterior Insulation	16	<b>STYRO Online Shop</b>	<b>43</b>
STYRO EIFS (ED) Exterior Decoration	17		
STYRO EIFS (ID) Insulation & Decoration	18		
STYRO EIFS (MM) Mixed Media	19		
STYRO Roof Insulation System	20		
STYRO Soffit Insulation System	21		
STYRO Landscaping System	22		
STYRO Ramp System	23		
STYRO Floor Raising System	24		
STYRO Cinema System	25		
STYRO Moulding System	26		



COMMITMENT  
TO QUALITY GUIDED BY  
A COMMON VISION



TRANSFORMING THE FUTURE OF EXPANDED POLYSTYRENE

ABOUT STYRO

OUR PHILOSOPHY

# INTRODUCTION

STYRO, a name that is synonymous with supreme quality fire retardant Expanded Polystyrene (EPS) products. We are the pioneers in our industry and continue to be the game-changer of the region. Over the years, we have excelled in our services through constant product innovation. Our prompt service and exceptional customer support made us the most reliable and trusted leader in the Expanded Polystyrene (EPS) industry. Our wide range of products and applications fulfils the needs of both construction and industrial business.

STYRO was incorporated to address the growing demands of an industry that had immense possibilities to grow. Today, the company through its ingenious thinking and technically skilled team delivers highly creative solutions. STYRO constantly explores new possibilities and to this end, we have introduced whole new creative concepts in the region – thanks to the out-of-the-box ideas developed by our engineering division.



## Vision

Our vision is to be known as a brand that stands for reliability, efficiency and responsiveness. To be the most preferred choice in the Expanded Polystyrene industry that fully complies with international safety and environmental standards and thereby delivers value for all our stakeholders.



## Mission

Create unique products and solutions that not only meets our client's need, but also exceeds their expectations. We constantly aim to bring innovation to the table through dedication and integrated management.



## Teamwork

People are the force behind our success. We as a team are dedicated to contribute to the best of our abilities and go that extra mile to deliver client satisfaction. Personnel commitment, professionalism and mutual respect are our core values and reflect in all our actions. We are a team of talented professionals from diverse cultural backgrounds, but when it comes to work, we join hands as one unit. We have successfully built long lasting relationships with our clients and that is purely because of our personalized and transparent approach.

# FIRE RETARDANT CLASS A



**CIVIL DEFENSE APPROVED**

## CLASS A FIRE RETARDANT



### What is Class A Fire Retardant?

It is a great achievement to be the only Class A fire retardant EPS manufacturer/supplier in the United Arab Emirates. Our outstanding EPS has been tested according to the International standards (UL 723) and as per Standard Test Method for Surface Burning Characteristics of Building Materials. The results show that we have truly invested in understanding our client's need and working with them to deliver high quality solutions.

### UL 723

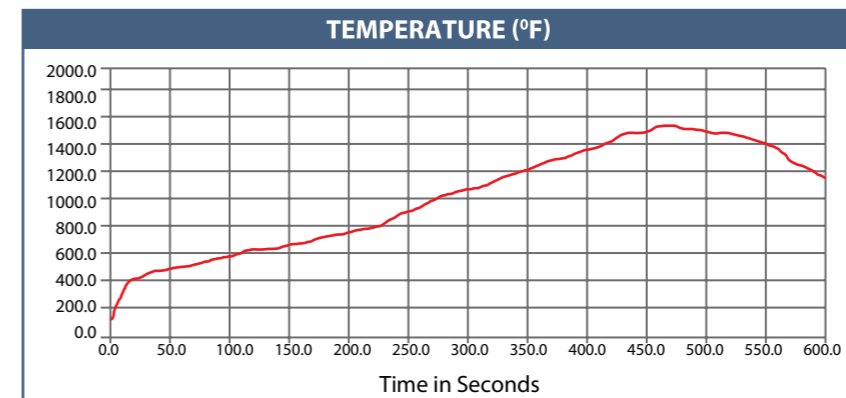
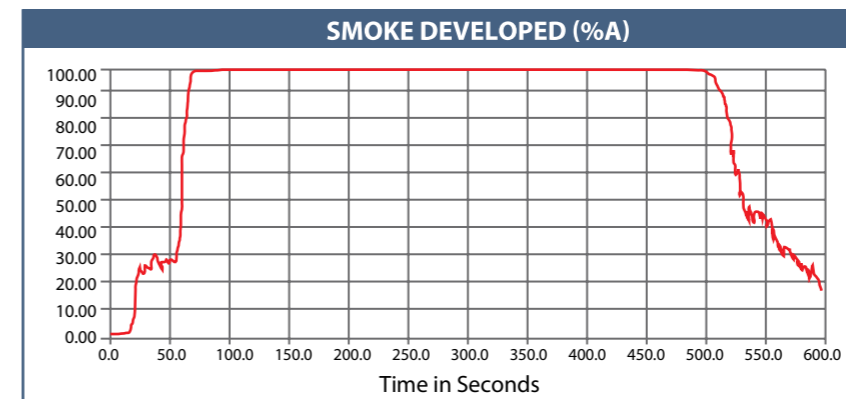
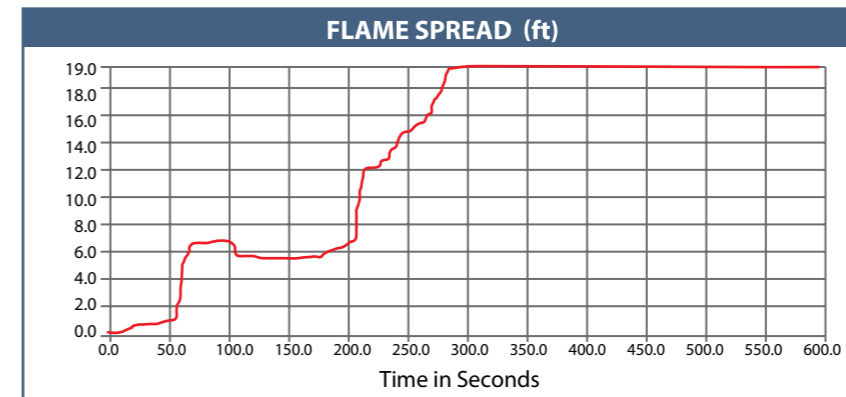
Standard Test Method for Surface Burning Characteristics of Building Materials

Authorities having jurisdiction usually refer to these categories:

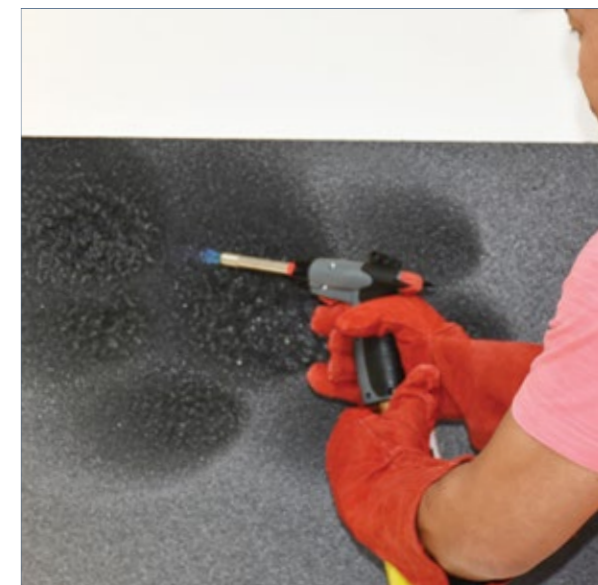
	Flame Spread Index	Smoke Development
Class A	0 - 25	450 Maximum
Class B	26 - 75	450 Maximum
Class C	76 - 200	450 Maximum

The burning behavior of STYRO material is Class A showing flame spread index FSI 5 and smoke development SD 20.

Sample	Flame Spread Index (FSI)	Smoke Development (SD)
STYRO Expanded Polystyrene (Graypor)	5	20



CIVIL DEFENSE APPROVED



# GREEN THINKING

## POWERING TOMORROW BY APPLYING GREEN IDEAS

Going green is a commitment that we carry forward as a culture in our organization. In line with the UAE's vision to foster eco-friendly systems as one of the main corporate social responsibility initiatives, we at STYRO adopt environment-friendly methods in manufacturing products and continue to look for ideas that can reduce carbon footprint.

In the last years, we have initiated several innovative Expanded Polystyrene solutions for the construction, decoration and packing industries in the Middle East region. For each kilogram of oil used in the manufacturing of STYRO insulation products, a saving of up to 200 kg of heating or cooling fuel can be achieved over the average life of a home.

Our products can help save a considerable amount of energy. The energy used to produce expanded polystyrene foam insulation for a typical house is regained after only one year through the amount of energy saved. It is also physically and chemically inert. It contains no known biological or physiological irritant, making it environment-friendly and it is also free from chlorine content.



SCAN  
FOR MORE INFO



### Recycling

STYRO is fully committed to recycle Expanded Polystyrene (EPS) and manufacturing waste into other products. Our recycling facilities serve EPS end-users, building and construction sites, and other XPS manufacturers. EPS fused products are chemically neutral and does not react with either groundwater or produce any gases when dumped. Thus, it may be disposed off without any problems. Due to its lightweight cellular structure, it assists the aeration of sanitary landfills and burns completely in refuse incinerators.



### Ozone Friendly

ODP=0 - STYRO EPS Products have a zero ODP (Ozone Depletion Potential) rating and is not noxious. The value of the ODP, the better for the ozone layer and therefore making it environment-friendly.



### CFC-HCFC Free

All STYRO products are manufactured with eco-friendly pentane gas as a blowing agent, therefore there is NO usage of any CFCs HCFC or its elements.

## The Advantage of Expanded Polystyrene (EPS)

- EPS is a great example of efficient utilization of natural resources – it contains 95% air.
- It has wide application temperature from – 80°C to + 80°C Max.
- The manufacture and use of EPS does not generate any risk to health or to the environment.
- EPS does not damage the ozone layer since it doesn't use CFCs or HCFCs in the manufacturing process.
- The transformation process consumes little energy and does not generate waste.
- The use of EPS for thermal insulation in the construction industry contributes to significant savings on heating and cooling buildings and a drastic reduction in the emission of polluting gases such as the CO<sub>2</sub> and SO<sub>2</sub>.
- EPS packaging protects products, helps reduce wastage and its lightweight nature also helps in reducing fuel consumption.
- Fungi and bacteria cannot easily grow on EPS.
- EPS makes up only a tiny part of Municipal Solid Waste (0.1%).
- As it is not biodegradable, EPS does not contaminate the air or water with gases or hydro-soluble substances.
- It is easy to adapt to any product or any design.
- EPS is 100% recyclable.

# STYRO CERTIFICATION

STYRO holds the below certification by testing authorities to provide our customers with confidence and trust the foundations for sound business partnerships.



## DCL Certified

All Products of STYRO Complies with product conformity certification scheme by Dubai Central Laboratories (DCL) under guideline of Dubai Municipality (DM) according to the International Standards ASTM C578-18 "Standard specification for cellular rigid polystyrene thermal insulation".



## ADQCC Certified

STYRO holds ADQCC product conformity certification scheme by Abu Dhabi Quality and Conformity Concl. According to the International Standards ASTM C578-18 "Standard specification for cellular rigid polystyrene thermal insulation".



## ICV Certified

STYRO is certified by Ministry of Industry & Advanced Technology for IN - Country Value Certification.



## ISO 9001 Certified

STYRO has Management certification from QRS for Quality Management System (QMS) ISO 9001, Environmental Management System (EMS) ISO 14001 and Occupational Health and Safety Management Systems ISO 45001 series.



## OSHAD Certified

STYRO holds certification of Occupational Safety and health system framework from Abu Dhabi and it is approved by Industrial Development Bureau and Abu Dhabi Public Health center.



## EGBC Certified

STYRO holds the certification from Emirates Green Building Council for providing sustainable products to the environment.



## ETL US Certified

STYRO holds Intertek ETL US Mark (Electrical Testing Laboratories in United States) for Thermal Insulation Boards of STYRO EPS and STYRO Graypor.



## Chamber of Commerce & Industry Memberships

STYRO is a member of Sharjah, Abu Dhabi, Dubai, Ajman and Ras Al Khaimah Chamber of Commerce and Industry.

# FEATURES OF EXPANDED POLYSTYRENE

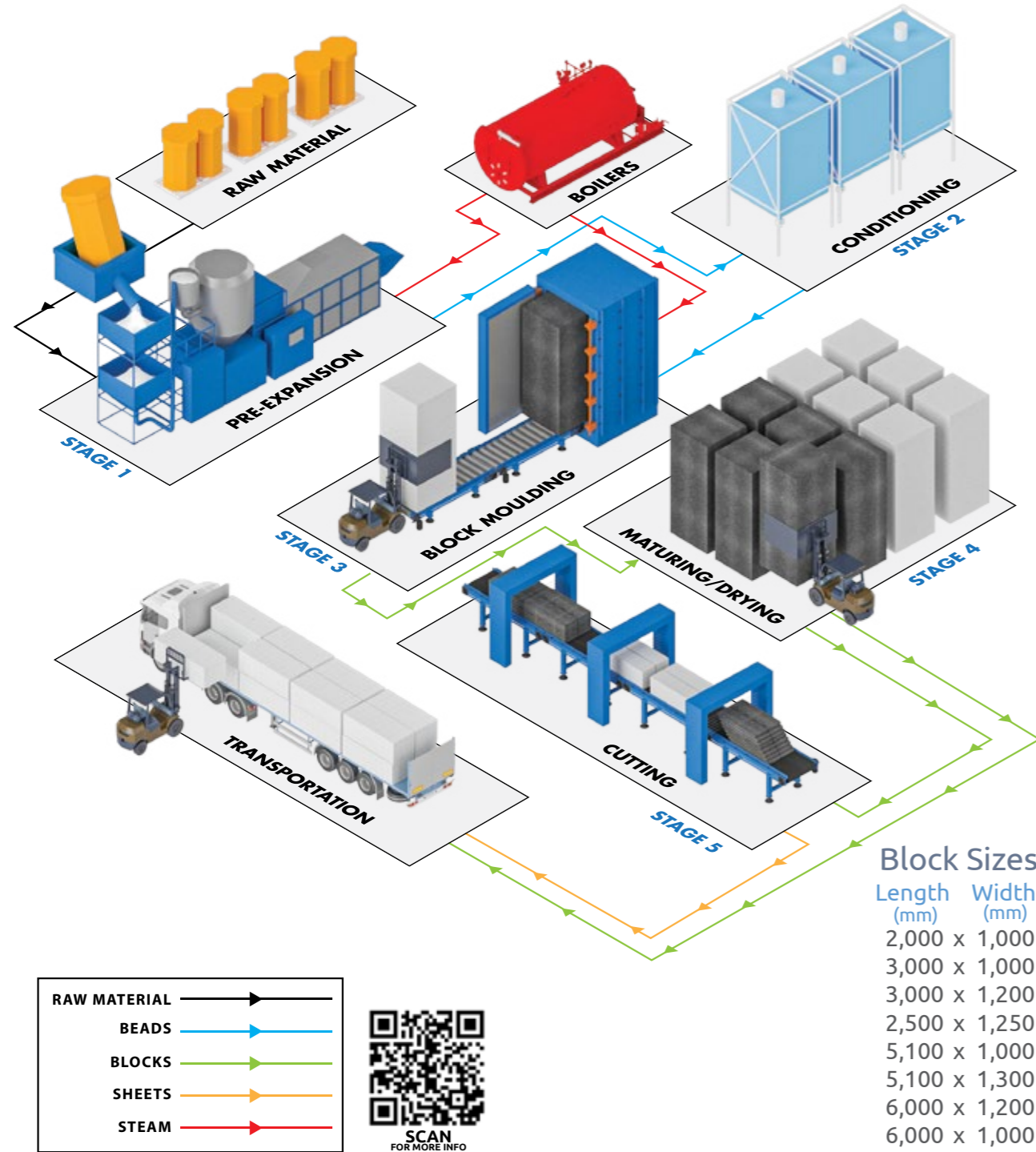
Cost Effective	Anti Termite	Ship Lapped
Recyclable	CFC & HCFC Free	Lightweight
Sustainable/ Reusable	Endless Design Possibilities	Floating Ability
High Thermal Insulation	High Compressive Strength	Resilient
Shock Absorption	Flexibility	Higher Stability
Fast Production	Non Flammable	Long Lasting
Durability	UV Resistant	Environmentally Safe
Unlimited Applications	ECO Friendly	Rustproof
Non Magnetic	Alkali Proof	Multiple Colors
Chemically Inert	Vapor Tight	Dimensionally Stable
Used in HVAC Industry	Hot Water Insulation	High Temp. Endurance
Corrosion Free	Acoustic Insulation	Load Bearing
Ozone Friendly	Loose Fill	Light Reflection
95% Air	Sculpture Shaping	Easy Fixing
Cooling Efficiency	Energy Saving	Customized

# EXPANDED POLYSTYRENE

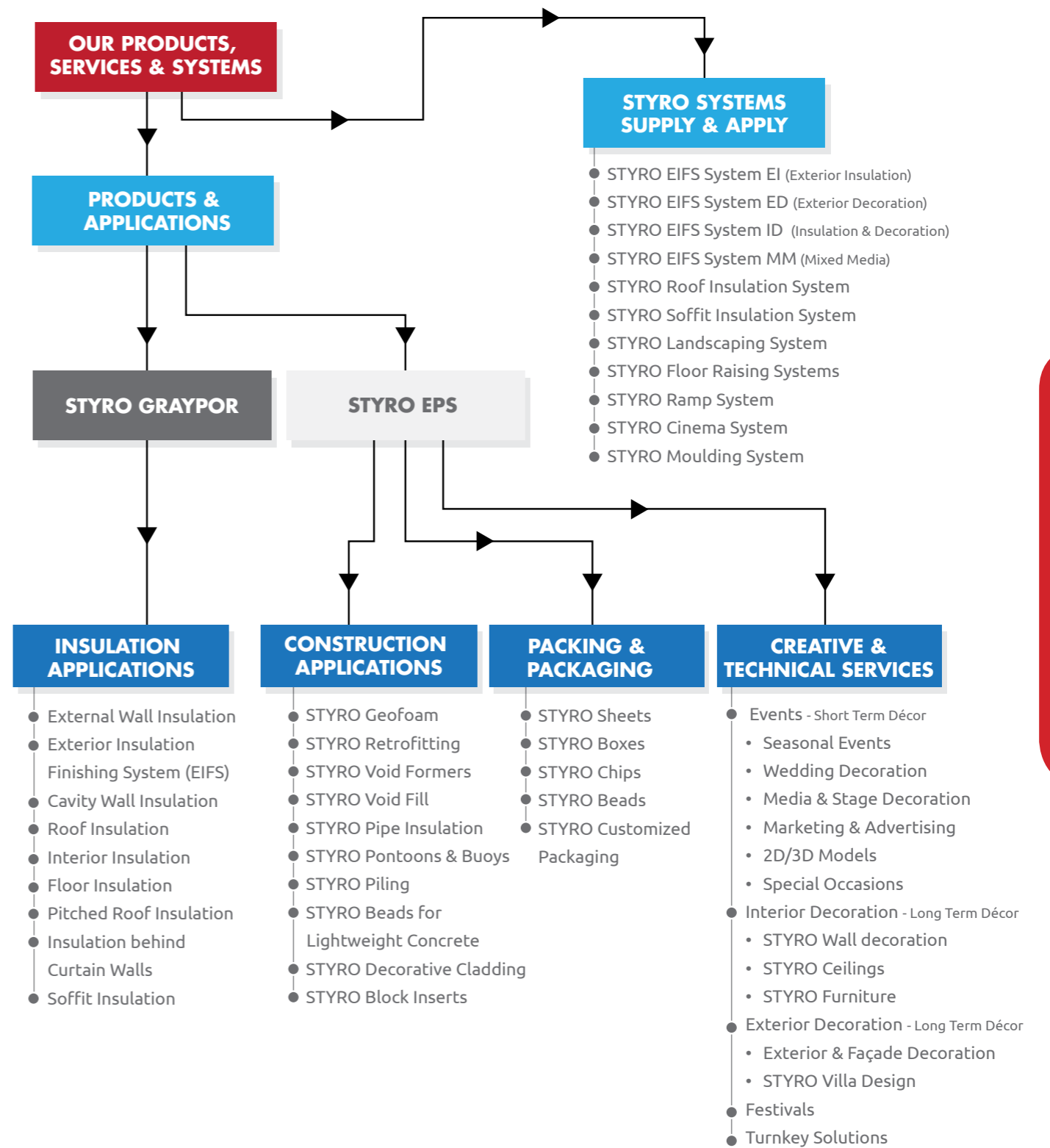
## Manufacturing Process

Small spherical granules, which are the byproducts of petroleum and natural gas are subjected to steam, resulting in the softening and expansion of the beads, about forty times of its original volume. The production of EPS comprises a set of complex processing procedures. Every small bead of polystyrene is fully sealed and they come with varying densities from 8-48 Kgs/m<sup>3</sup>. They are produced for various applications where the material is used to optimize its performance and strength.

The manufacturing of Expanded Polystyrene (EPS) goes through the following stages:

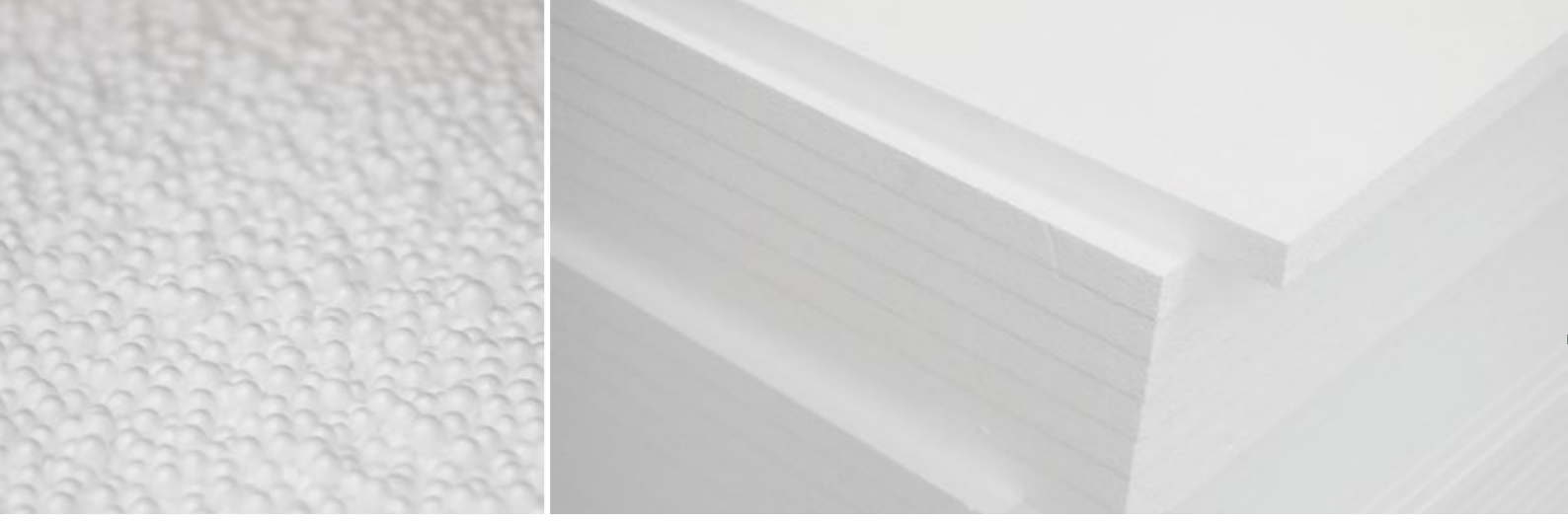


# STYRO BUSINESS MODEL



HOW WE DO IT

STYRO BUSINESS MODEL



# STYRO EPS

Expanded Polystyrene (EPS) is a generic term for polystyrene and styrene copolymers. It is a rigid cellular plastic foam material derived from petroleum and natural gas byproducts.

EPS is one of the lightest in all the construction materials allowing ease of handling and faster construction time. Its outstanding thermal insulation properties and durability ensures performance throughout the lifetime of the building/construction application where it is used.



## STYRO EPS Applications

- STYRO EDFs
- STYRO Geofoam
- STYRO for Void Fill
- STYRO Floor Raising
- STYRO for Void Formers
- STYRO for Pipe Insulation
- STYRO for Pontoon and Buoy
- STYRO Customized Packaging
- STYRO for Piling and Guide Wall



## STYRO EPS Product Codes

- STYRO 120 (08-12) kg/m<sup>3</sup>
- STYRO 150 (12-15) kg/m<sup>3</sup>
- STYRO 180 (15-18) kg/m<sup>3</sup>
- STYRO 220 (18-22) kg/m<sup>3</sup>
- STYRO 290 (22-29) kg/m<sup>3</sup>
- STYRO 380 (29-38) kg/m<sup>3</sup>
- STYRO 460 (38-48) kg/m<sup>3</sup>
- STYRO 500 (48-50) kg/m<sup>3</sup>
- STYRO 600 (min 50) kg/m<sup>3</sup>



# STYRO EPS (Expanded Polystyrene)

## TECHNICAL / PHYSICAL PROPERTIES

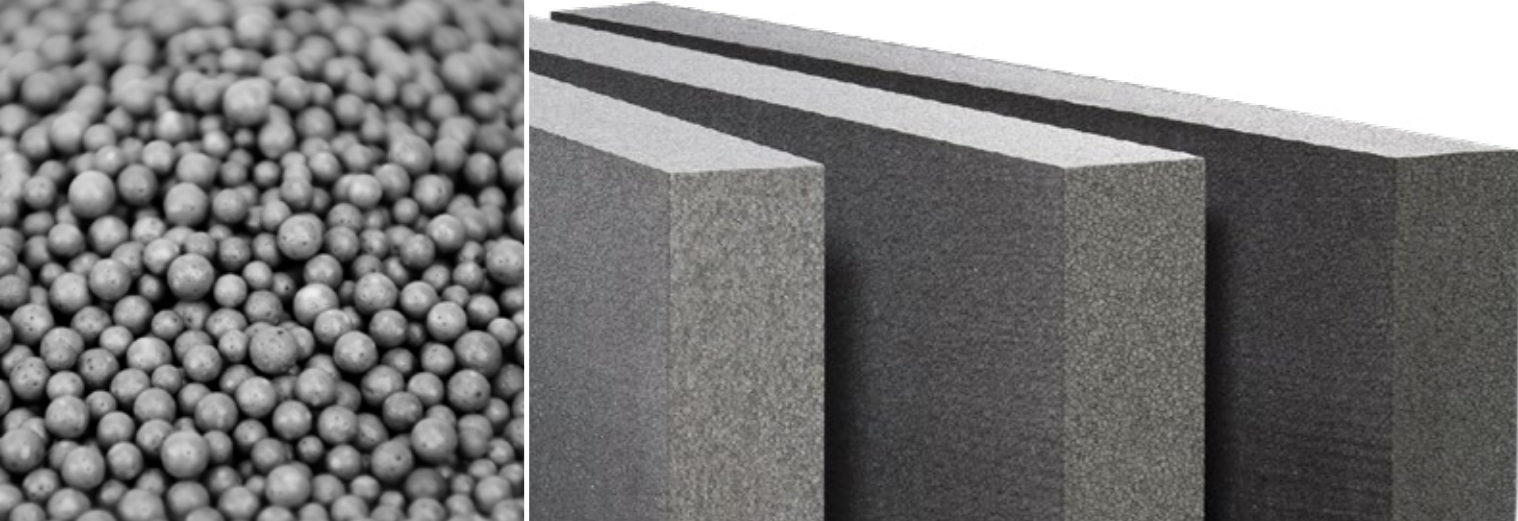
Standards	ASTM C 578	TYPE XI	TYPE I	TYPE VIII	TYPE II	TYPE IX	TYPE XIV	TYPE XV
	BS 3837	LD	SD	HD	EHD	UHD	SHD	XD
Product	STYRO 150	STYRO 180	STYRO 220	STYRO 290	STYRO 380	STYRO 460	STYRO 500	STYRO 600
Density	12-15	15-18	18-22	22-29	29-38	38-48	48-50	Min 50
	( Kg / m <sup>3</sup> )							
Compressive Resistance	35	69	90	104	173	276	414	469
	( @10 % deformation, min kPa )							
Thermal Resistance R-Value	0.53	0.60	0.64	0.67	0.71	0.71	0.73	0.73
	( of 25.4 mm thickness @ mean temperature of 24 ± 1 °C min, K.m <sup>2</sup> /W )							
Thermal Conductivity K-Value	0.0482	0.0419	0.0394	0.0377	0.0356	0.0356	0.0347	0.0347
	( max, W/m.K @ 35 °C and 60 % RH )							
Flexural Strength	70	173	208	240	345	414	517	550
	( min, kPa )							
Water Vapor Permeance	5.0	5.0	3.5	3.5	2.5	2.5	2.5	2.5
	( of 25.4 mm thickness, max, perm )							
Water Absorption	4.0	4.0	3.0	3.0	2.0	2.0	2.0	2.0
	( total immersion, max, volume % )							
Dimensional Stability	2.0	2.0	2.0	2.0	2.0	2.0	2.0	2.0
	( change in dimensions, max % )							
Oxygen Index	24	24	24	24	24	24	24	24
	( min, volume % )							
Flame Spread Index	5	5	5	5	5	5	5	5
	( max, as per surface burning characteristics-UL 723 )							
Smoke Developed	5	5	5	5	5	5	5	5
	( max, as per surface burning characteristics-UL 723 )							



STYRO PRODUCTS

STYRO PRODUCTS





# STYRO GRAYPOR

## TECHNICAL / PHYSICAL PROPERTIES

# STYRO GRAYPOR

STYRO Graypor is an innovative, energy-efficient and cost-effective graphite polystyrene rigid insulation foam introduced by BASF. STYRO produces this unique insulation material for a wide range of construction applications.

STYRO Graypor has higher insulation values compared to white EPS as the graphite reflects radiant heat energy like a mirror, increasing the material's resistance to the flow of heat, or R-value.



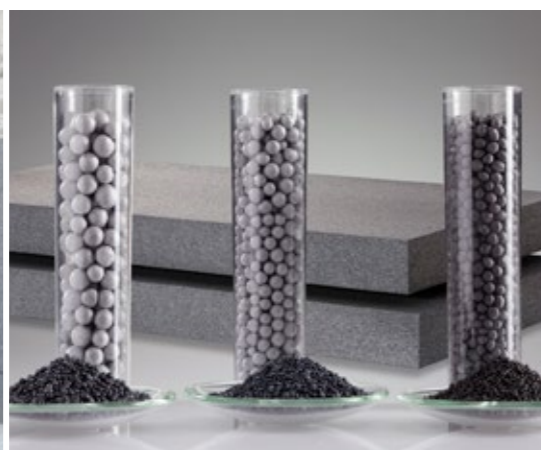
### STYRO Graypor Applications

- Roof Insulation
- Floor Insulation
- Soffit Insulation
- Interior Insulation
- Exterior Insulation
- Cavity Wall Insulation
- External Wall Insulation Finishing System (EIFS)
- Pitched Roof Insulation
- Insulation behind Curtain Walls



### STYRO Graypor Product Codes

- STYRO Graypor 150 (12-15) kg/m<sup>3</sup>
- STYRO Graypor 180 (15-18) kg/m<sup>3</sup>
- STYRO Graypor 220 (18-22) kg/m<sup>3</sup>
- STYRO Graypor 290 (22-29) kg/m<sup>3</sup>
- STYRO Graypor 380 (29-38) kg/m<sup>3</sup>



Standards	ASTM C 578	TYPE XI	TYPE I	TYPE VIII	TYPE II	TYPE IX
	BS 3837	LD	SD	HD	EHD	UHD
Product	Graypor 150	Graypor 180	Graypor 220	Graypor 290	Graypor 380	
Density	12-15	15-18	18-22	22-29	29-38	
	( min, Kg / m <sup>3</sup> )					
Compressive Resistance	35	69	90	104	173	
	( @ yield or 10 % deformation, which occurs first, min kPa )					
Thermal Resistance R-Value	0.75	0.78	0.79	0.79	0.79	0.79
	( of 25.4 mm thickness @ mean temperature of 24 ± 1 °C min, K.m <sup>2</sup> /W )					
Thermal Conductivity K-Value	0.0335	0.0322	0.0321	0.0320	0.0320	0.0320
	( max, W/m.K @ 35 °C and 60 % RH, as per independent tests )					
Flexural Strength	70	173	208	240	345	
	( min, kPa )					
Water Vapor Permeance	5	5	3.5	3.5	2.5	
	( of 25.4 mm thickness, max, perm )					
Water Absorption	4	4	3	3	2	
	( total immersion, max, volume % )					
Dimensional Stability	2.0	2.0	2.0	2.0	2.0	2.0
	( change in dimensions, max % )					
Oxygen Index	24	24	24	24	24	24
	( min, volume % )					
Flame Spread Index	5	5	5	5	5	5
	( max, as per surface burning characteristics-UL 723 )					
Smoke Developed	20	20	20	20	20	20
	( max, as per surface burning characteristics-UL 723 )					

STYRO PRODUCTS

STYRO PRODUCTS



## STYRO EIFS (EI)

### Exterior Insulation Finishing System

External Insulation Finishing System (EIFS) is a lightweight industrial wall insulator that includes STYRO Graypor as an insulation layer and thin synthetic coatings with fiber reinforcement.

STYRO Graypor is an energy-efficient, cost-effective, innovative Expanded Polystyrene insulation product commonly used as the base material in the (EIFS).

#### Features:

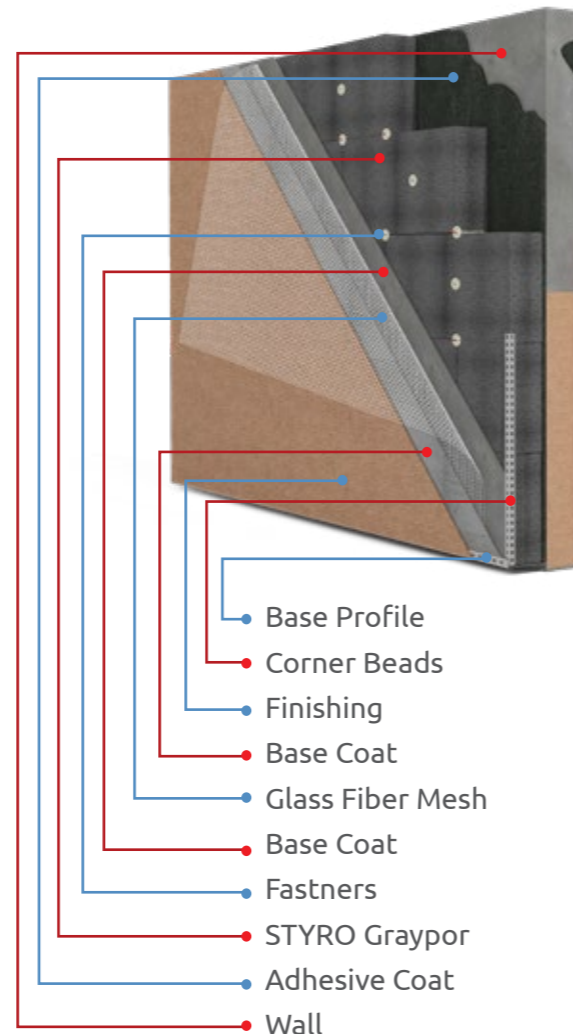
- Eco Friendly
- Lightweight
- Stable & Easy to Apply
- Class A Fire Retardant
- Good Elastic Properties
- Good Dimensional Stability
- Prevents Cracks Due to Expansion
- Good Insulator with Long Term R Value

#### Recommended Products:

- STYRO Graypor 180
- STYRO Graypor 220



SCAN FOR MORE INFO



STYRO SYSTEMS

STYRO SYSTEMS

## STYRO EIFS (ED)

### Exterior Decoration Finishing System

STYRO Decoration Finishing System (EDFS) is a smart alternative in the building decoration industry for being lightweight and simple to install on-site.

STYRO continually offers customized lightweight facade solutions for all interfaces. It is designed to achieve aesthetic factors and integrate with the essential elements of the building.

#### Features:

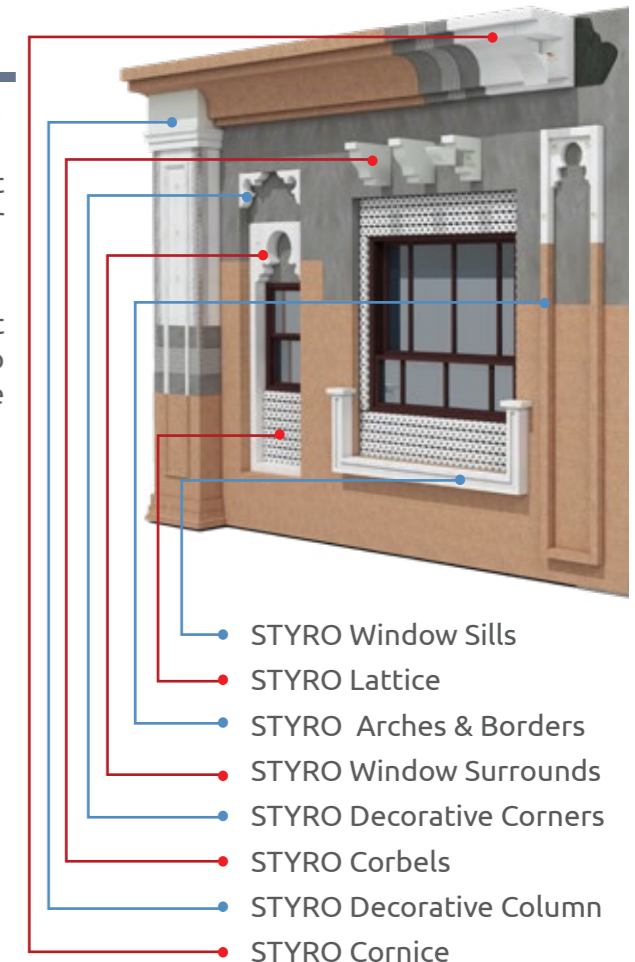
- Lightweight
- Easy to Apply
- CFC & HCFC Free
- Class A Fire Retardant
- High Impact Resistance
- Good Dimensional Stability
- Unlimited Shapes and Designs
- Prevents Cracks due to Expansion

#### Recommended Products:

- STYRO 220
- STYRO 380



SCAN FOR MORE INFO





## STYRO EIFS (ID)

### Insulation & Decoration System

In STYRO EIFS (ID), metal studs are used to extend the substrate from existing wall (sheathing) to achieve the design as per the project requirements.

Cement board or Moisture Resistant Gypsum board used as substrate for installing the STYRO EIFS. STYRO EIFS (ID) is a replacement of GRC system, adding the value engineering to the project by reducing the cost.

#### Features:

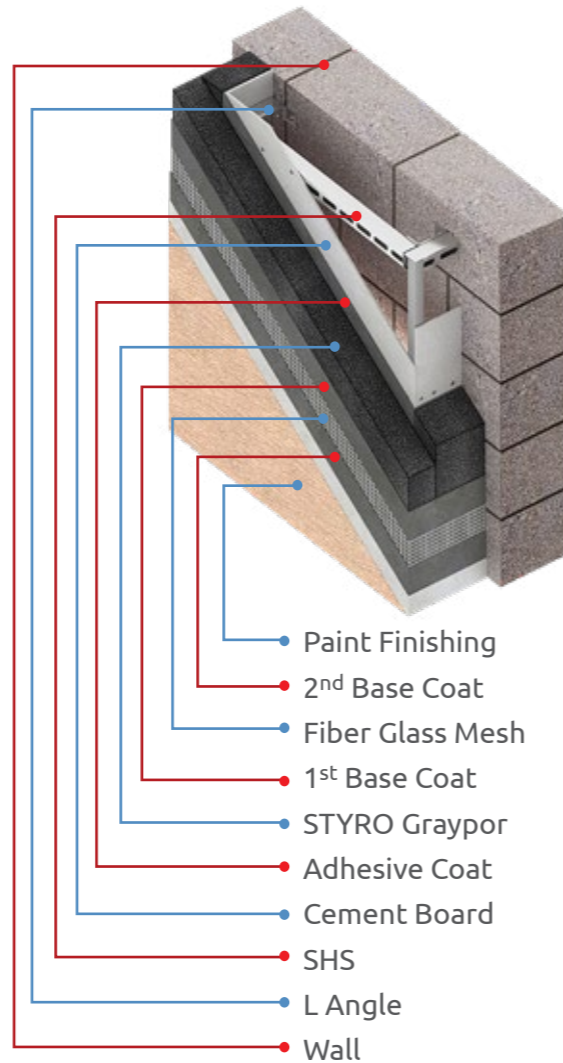
- Lightweight
- Easy to Apply
- Unlimited Shapes
- Excellent Insulation
- Fire Retardant
- High Impact Resistance
- ECO Friendly

#### Recommended Products:

- STYRO Graypor 180
- STYRO Graypor 220



SCAN FOR MORE INFO



## STYRO EIFS (MM)

### Mixed Media Finishing System

STYRO is executing projects using multi-media materials other than EPS, in order to comply with the project requirement and design factors. Materials like cement board, gypsum board, acrylic sheet, wood, steel or any kind of building material that the project demands can be used in the mixed media application. In this case, there is no constrain of limit to use only EPS, this option gives freedom to the designer and architectural engineer for achieving their dream design and aesthetic look.

#### Features:

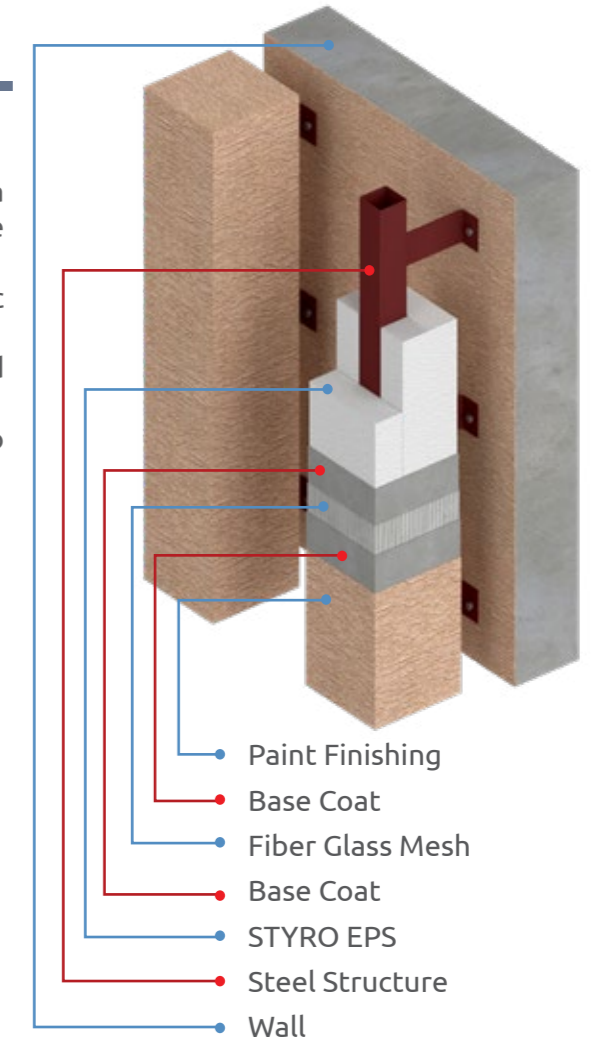
- Design Flexibility
- Meets Architectural Design Criteria
- No Constrain on Choosing Material
- Flame Retardant
- Low Maintenance Cost

#### Recommended Products:

- STYRO 220



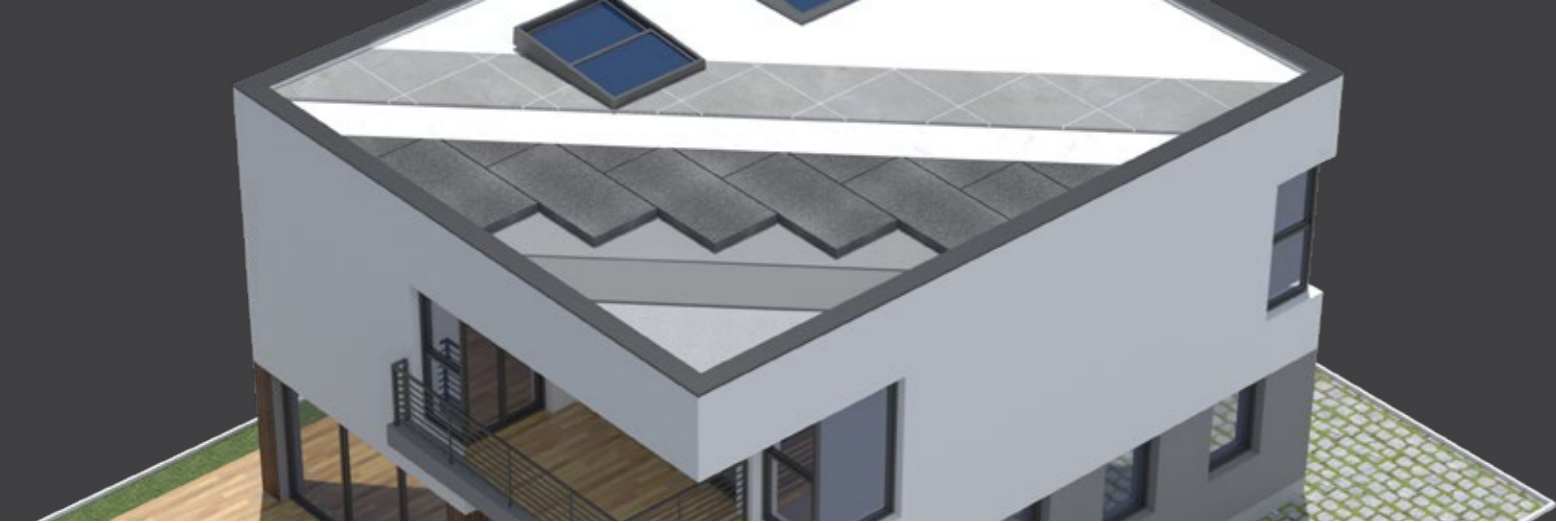
SCAN FOR MORE INFO



STYRO SYSTEMS

STYRO SYSTEMS





## STYRO ROOF INSULATION SYSTEM

STYRO Combo Roof is comprehensive roofing system comprising of waterproofing, thermal insulation and finishing for the roof.

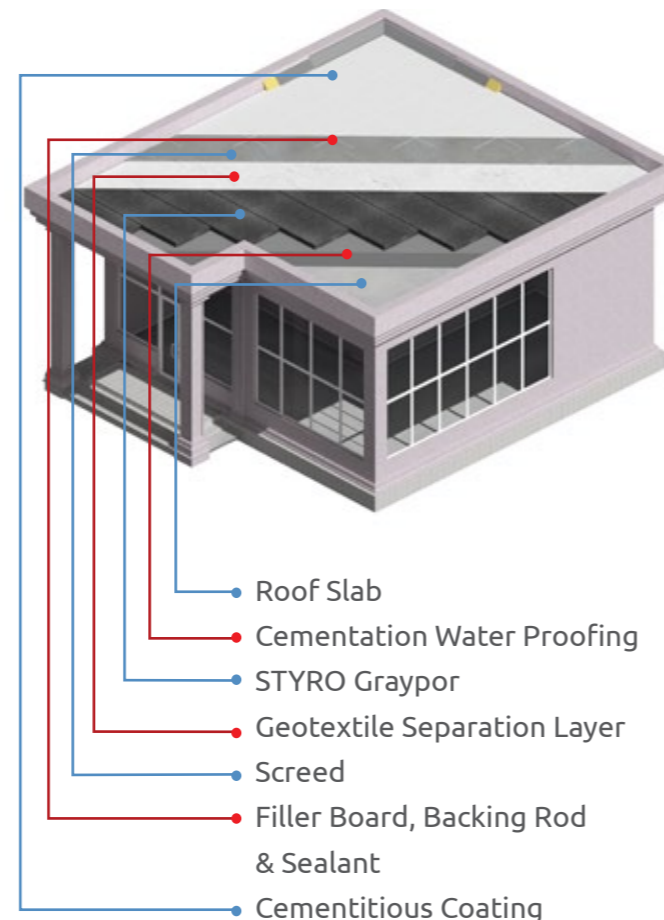
STYRO EPS is a closed-cell, lightweight insulation that is compatible with all commercial roofing systems. The successful use of EPS insulation depends upon correct installation in accordance with STYRO's method of fixation.

### Features:

- High Compressive Strength
- Flame Retardant
- Low Thermal Conductivity
- Long Term R value Retention
- ODP & GWP Less than 5
- CFC & HCFC Free
- Cost Effective
- Lightweight
- Environment Friendly

### Recommended Products:

- STYRO Graypor 180



## STYRO SOFFIT INSULATION SYSTEM

STYRO Soffit Insulation System is a lightweight ceiling slabs insulator that includes STYRO Graypor as an insulation layer, with fiber reinforcement, base coat and finishing material.

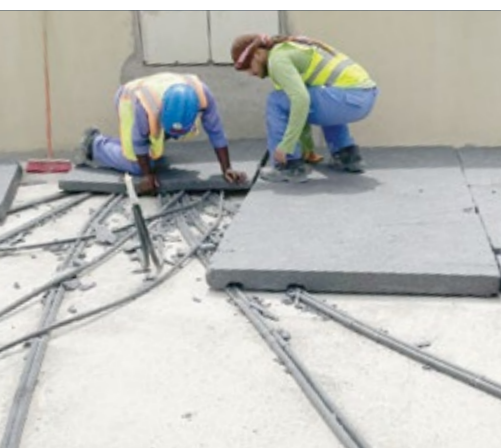
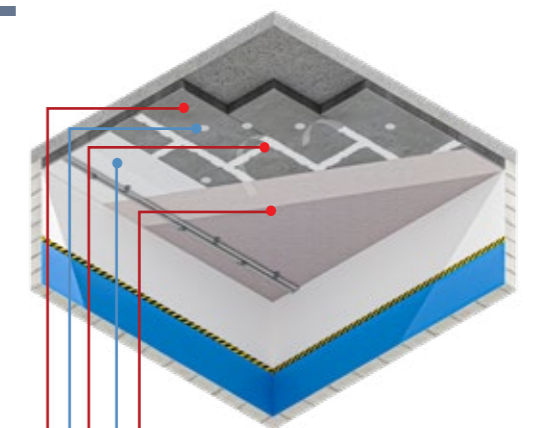
Soffits are the underside of architectural structures such as an utility area, a balcony and car parking. By insulating these areas we can provide energy efficiency benefits to the structure.

### Features:

- Good Insulation Properties
- Flame Retardant
- Cost Saving
- Lightweight
- Easy Installation
- ODP & GWP Less than 5
- CFC & HCFC Free
- Environment Friendly

### Recommended Products:

- STYRO 180
- STYRO 220





## STYRO LANDSCAPING SYSTEM

STYRO EPS blocks are a unique combination of lightweight and high compressive strength which makes it an attractive filling material for a wide variety of landscaping applications.

From the smallest details at a community splash pad to a large multi-functional master plan, STYRO landscaping solution reflects a sensibility that is both pragmatic and imaginative. It can be used in the golf course or any commercial landscaping applications.

### Features:

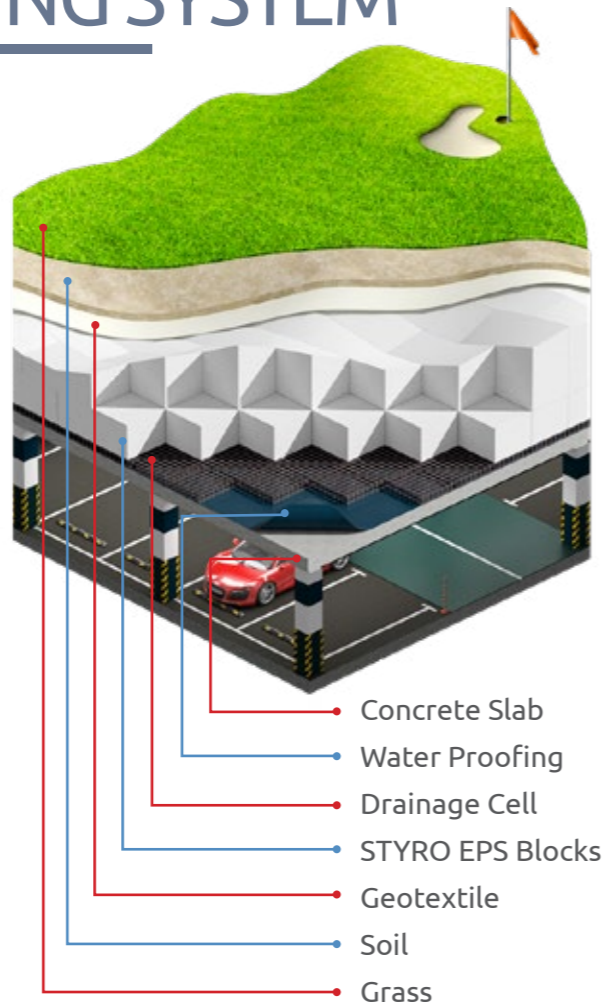
- Lightweight
- Easy to Install
- Cost Effective
- Flexible in Design
- High Compressive Strength

### Recommended Products:

- STYRO 500



SCAN FOR MORE INFO



## STYRO RAMP SYSTEM

Styro Expanded Polystyrene Blocks are used to create ramps/sloped path way. Back filling of soil is not feasible for modern construction applications due to structural load, safety, time and cost saving factor. Structural engineers always prefer to go for light weight material for such kind of applications.

### Features:

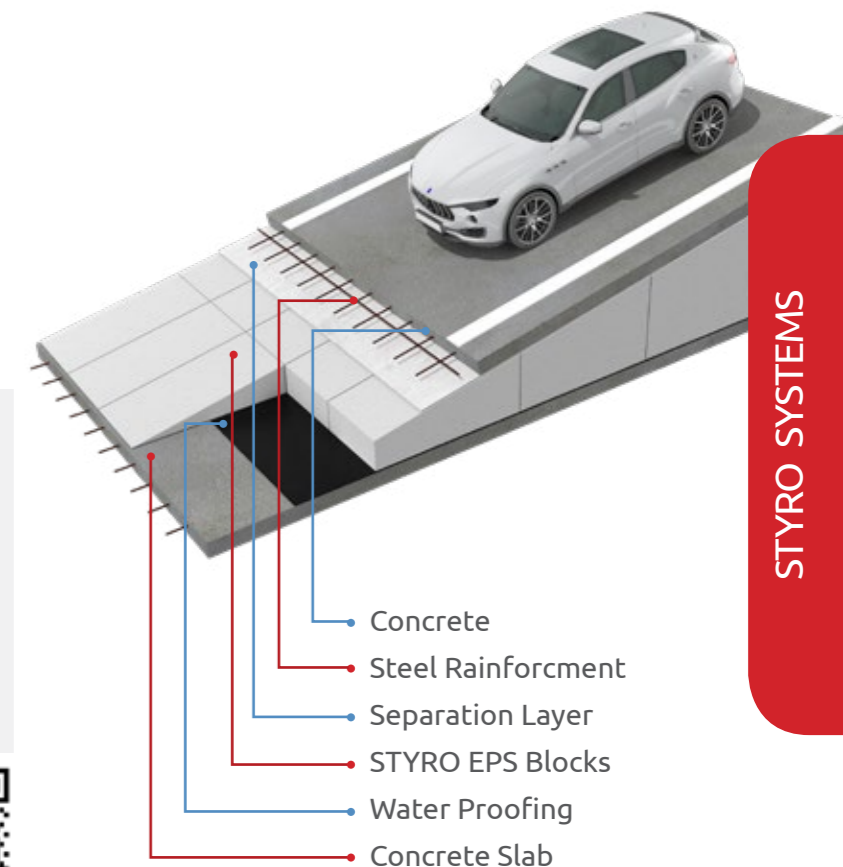
- Lightweight Versus High Compressive Strength
- Fast Installation Versus Conventional Backfilling
- Flame Retardant
- CFC & HCFC Free
- High Cost Efficiency
- Environment Friendly

### Recommended Products:

- STYRO 380



SCAN FOR MORE INFO





## STYRO FLOOR RAISING SYSTEM

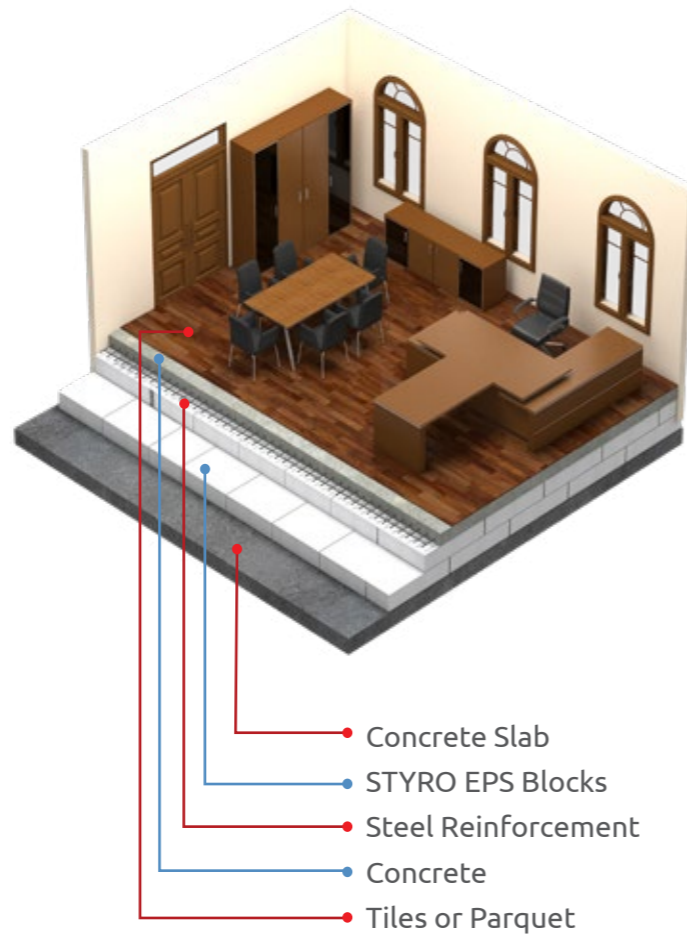
All civil engineers, architects, contractors and consultants unilaterally agreed that STYRO Expanded Polystyrene EPS is the right choice to use as floor raising for lightweight fill application. Let it be a residence, villa, apartment, stadium, cinema hall, high-rise building, swimming pool, mall, showroom or themed park, the construction work can not be completed without having STYRO Expanded Polystyrene (EPS) as lightweight construction fill material.

### Features:

- Lightweight
- Cost Effective
- Easy to Install
- Flexible in Design
- High Compressive Strength

### Recommended Products:

- STYRO 500



## STYRO CINEMA SYSTEM

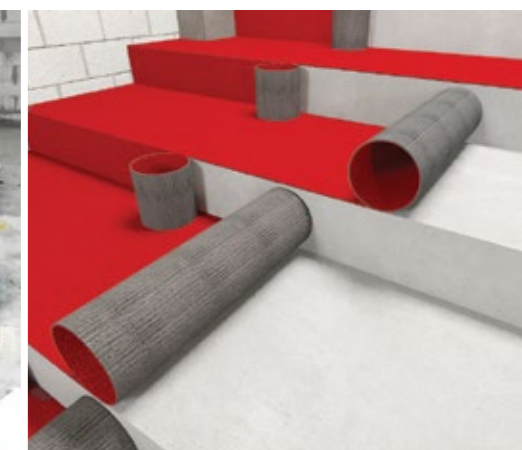
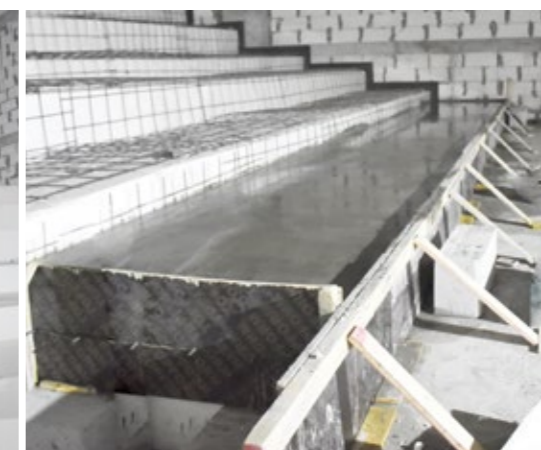
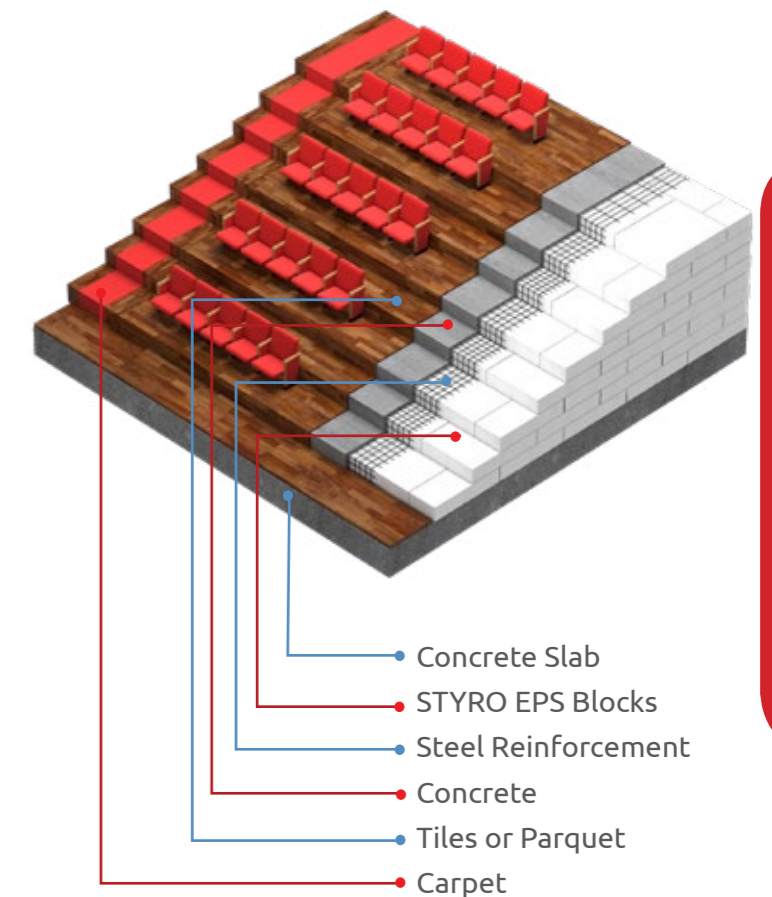
STYRO EPS blocks are the ideal choice for cinema raised floor applications as it is lightweight and distributes the load consistently. It is easy to handle at the site and does not add weight to the existing structure which is considered the safest construction material for this application.

### Features:

- Eco Friendly
- Lightweight
- Stable & Easy to Apply
- Good Elastic Properties
- Good Dimensional Stability
- Prevents Cracks Due to Expansion
- Good Insulator with Long Term R Value

### Recommended Products:

- STYRO Graypor 180
- STYRO Graypor 220





## STYRO MOULDING SYSTEM

STYRO is used as a mould for concrete casting which became popular in all construction applications across the globe. STYRO moulds can be easily created for any shapes and sizes, this flexibility makes STYRO products the ideal solution for a wide range of construction and creative projects.

### Features:

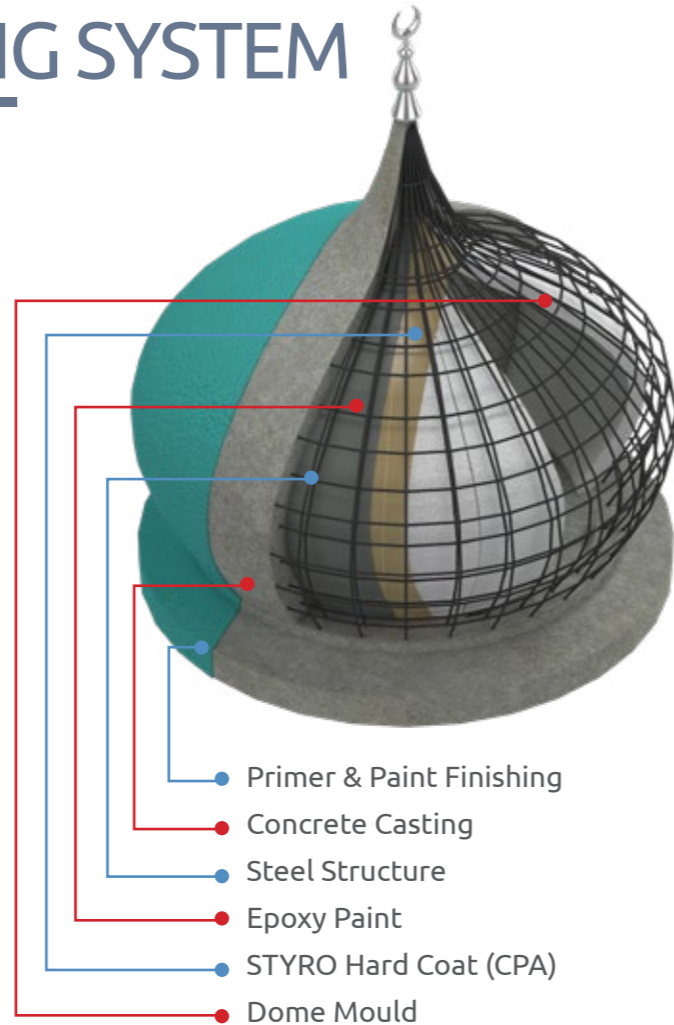
- Cost Effective
- Easy to Install
- Lightweight
- Flexible in Design
- 100% Recyclable
- Easy to Dismantle
- Environment Friendly

### Recommended Products:

- STYRO 290



SCAN FOR MORE INFO



## STYRO RETROFITTING

STYRO Retrofitting is the context of energy efficiency of the building to save energy expenses. It is the process of modifying the existing building with better insulation systems.

STYRO Retrofitting includes Interior Insulation (Partition Wall) and Exterior Insulation (STYRO EIFS & EDFs , Roof Insulation and Soffit Insulation).

### Features:

- Improved Energy Efficiency
- Reduces Internal Condensation
- Energy Saving
- Aesthetic Look
- Fire Retardant System
- New Look for The Old Building
- Extended The Life of Building
- Environment Friendly

### Recommended Products:

- STYRO GRAYPOR 180
- STYRO GRAYPOR 220

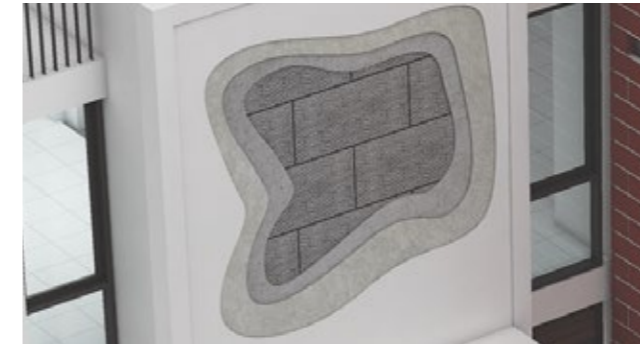
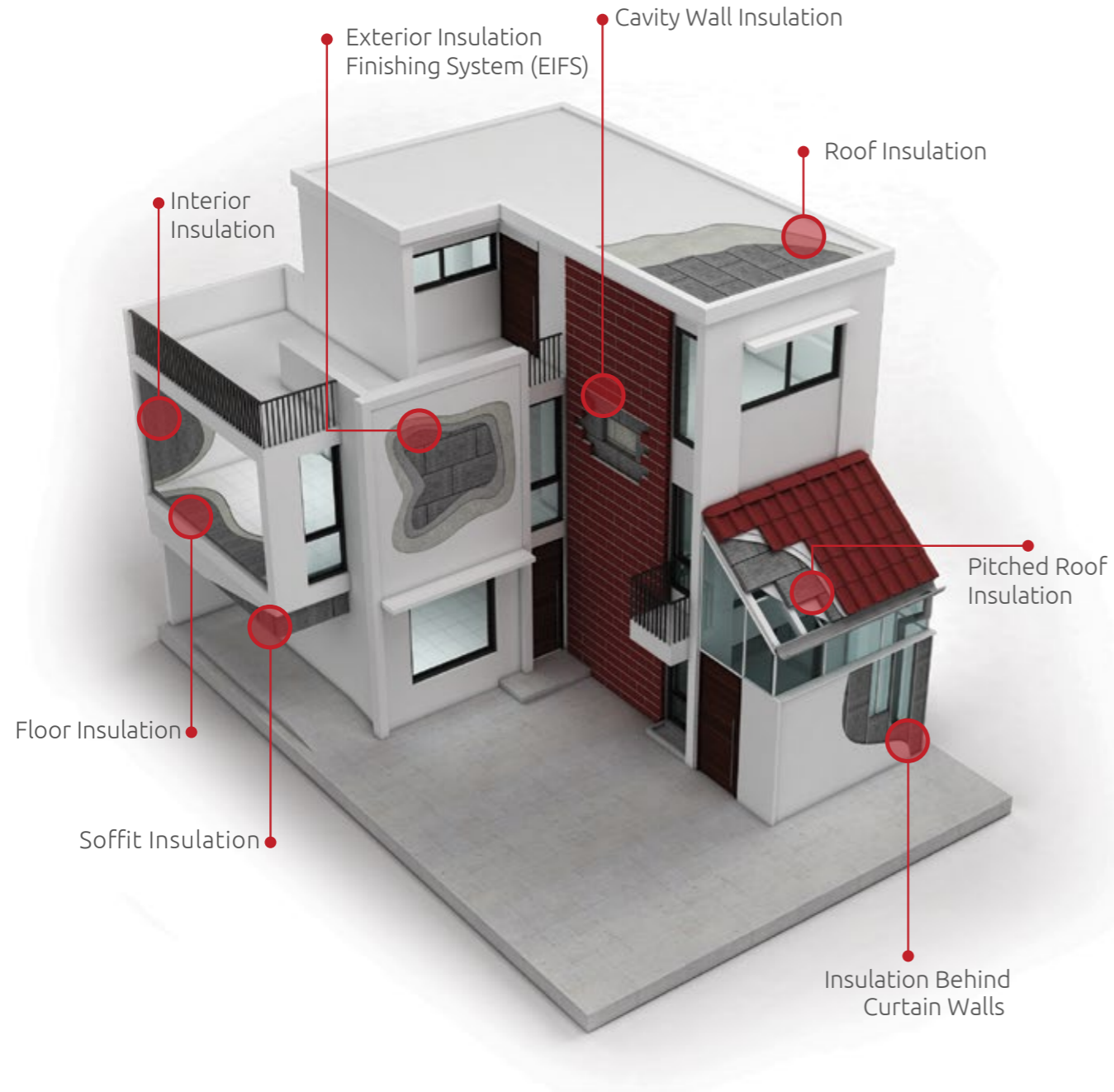


SCAN FOR MORE INFO



# STYRO INSULATION

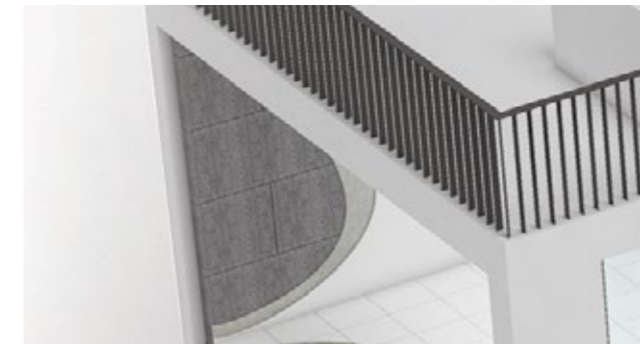
STYRO EPS has amazing physical and thermal properties. Its durability ensure high performance throughout the construction and building applications. EPS is commonly used for EIFS, wall insulation and ceiling heat protection.



**Exterior Insulation Finishing System(EIFS/ETICS)**  
Suggested Product: • STYRO Graypor 180  
• STYRO Graypor 220



**Roof Insulation**  
Suggested Product: STYRO Graypor 380



**Interior Insulation**  
Suggested Product: STYRO Graypor 180



**Floor Insulation**  
Suggested Product: STYRO Graypor 380



**Cavity Wall Insulation**  
Suggested Product: STYRO Graypor 180



**Pitched Roof Insulation**  
Suggested Product: STYRO Graypor 380



**Soffit Insulation**  
Suggested Product: STYRO Graypor 220



**Insulation Behind Curtain Walls**  
Suggested Product: STYRO Graypor 220



STYRO APPLICATIONS

STYRO APPLICATIONS





# STYRO DECORATIVE CLADDING for Steel Structures

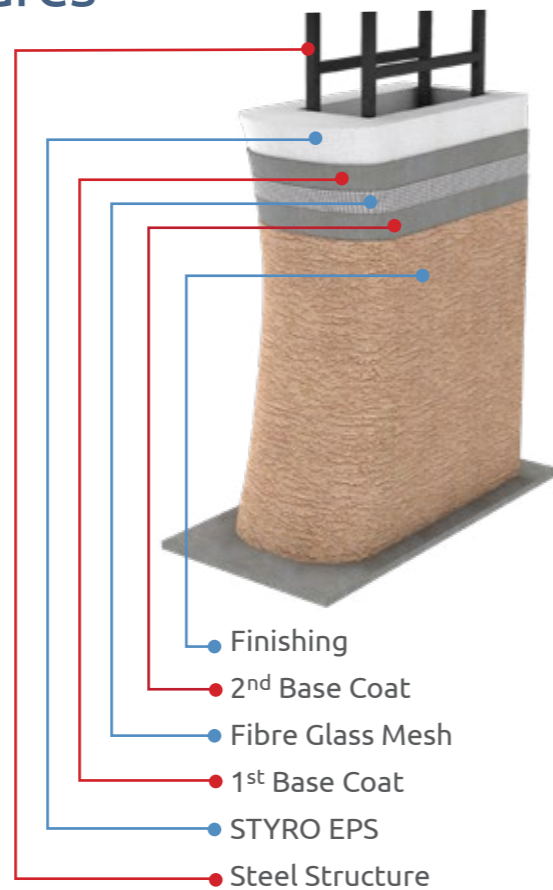
STYRO provides an integrated approach to all aspects of cladding and facade engineering. Our interface access solutions go beyond routine design. We help all architects to execute successful designs by integrating lightweight exterior interface systems.

### Features:

- Eco Friendly
- Self-Insulated
- Cost Effective
- Class A Fire Retardant
- Lightweight & Durable
- Water & Weatherproof
- Flexible in Design and Shape
- Easy to Install – Saves Time & Effort

### Recommended Products:

- STYRO 290



STYRO APPLICATIONS

STYRO APPLICATIONS



# STYRO GEOFOAM

STYRO Expanded Polystyrene is an eco-friendly material that provides an excellent lightweight solution for all types of geotechnical projects. STYRO blocks are preferred filling materials for civil engineers, architects and geotechnical experts because it is used to replace heavy traditional filling materials to reduce levelling works.

STYRO EPS is also used for slope stabilization to improve slope stability.

### Features:

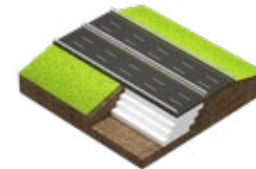
- Lightweight
- Easy to Install
- Flexible in Design
- Fast Construction
- High Compressive Strength

### Recommended Products:

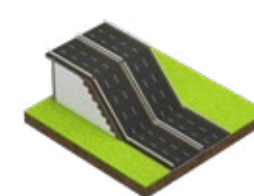
- STYRO 500
- STYRO 460



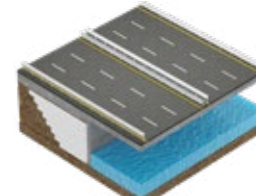
Road Construction Over Poor Soils



Road Widening



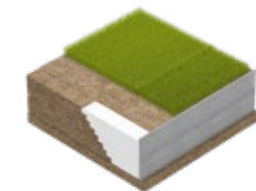
Bridge Underfill



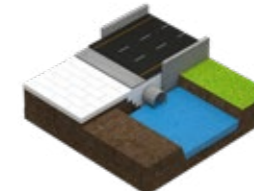
Bridge Abutment



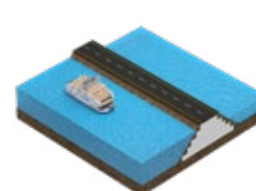
Airport Runway



Retaining & Buried Wall Backfill



Culverts, Pipelines & Buried Structures



Levees



## STYRO VOID FORMERS

STYRO EPS can be used as void formers to create void spaces, void shapes and holes through molding concrete to form spacer for interior designs, cables, plumbing pipes and electrical networks within all types of buildings.

### Features:

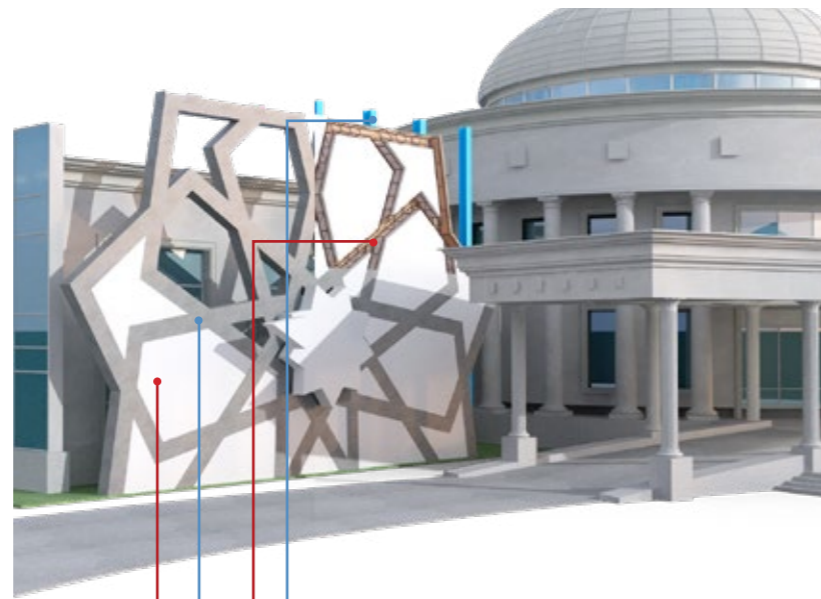
- Low Cost
- Lightweight
- Accuracy & Consistency
- Flexible in Design & Size

### Recommended Products:

- STYRO 120
- STYRO 150



SCAN FOR MORE INFO



- Shuttering
- Steel Reinforcement
- Concrete
- STYRO EPS Special Shape

STYRO APPLICATIONS

## STYRO VOID FILL

STYRO EPS blocks have excellent compressive strength, workability and durability. It is widely used as a void fill to reduce the structural dead load in all modern buildings and bridges thus saving significant concrete cost and time.

### Features:

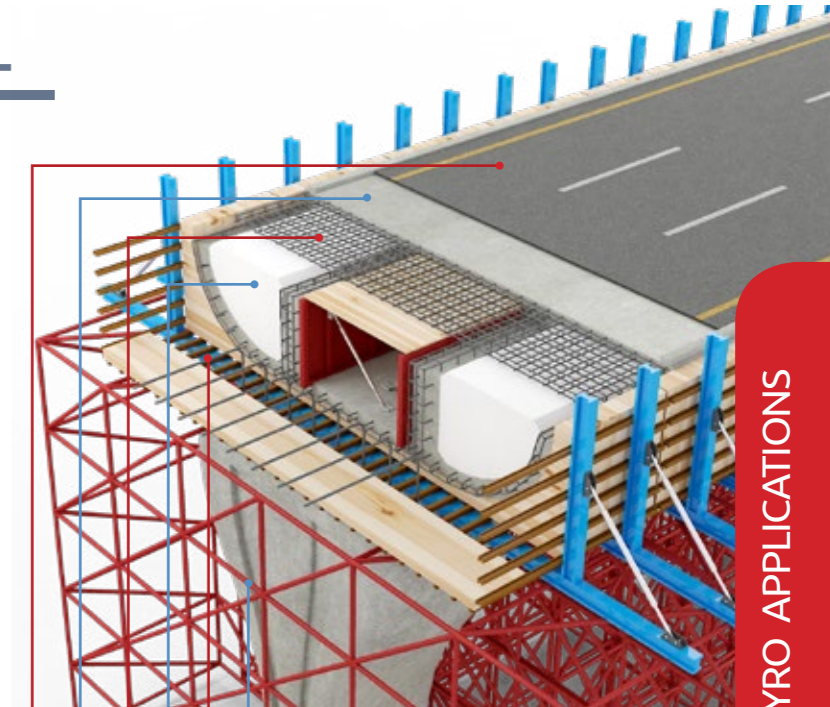
- Durability
- Workability
- Lightweight
- High Compressive Strength

### Recommended Products:

- STYRO 290
- STYRO 380
- STYRO 460
- STYRO 500

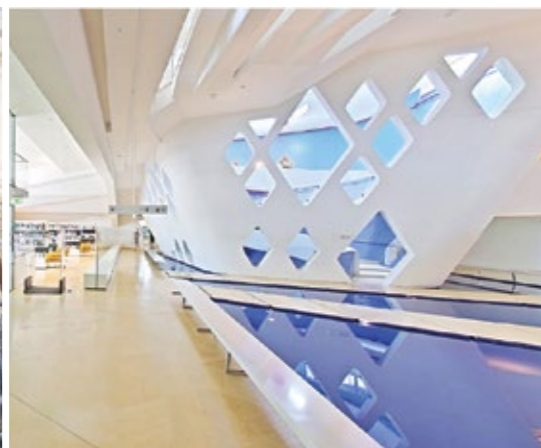


SCAN FOR MORE INFO



- Scaffolding
- Shuttering
- STYRO EPS Special Shape
- Steel Reinforcement
- Concrete
- Asphalt

STYRO APPLICATIONS





## STYRO PIPE INSULATION

STYRO EPS pipe sections are widely used as an insulating material for utility pipes in food, textile, chemical processing, HVAC and cold stores industries in order to prevent utility piping from huge energy losses due to condensation, conduction and convection factors.

### Features:

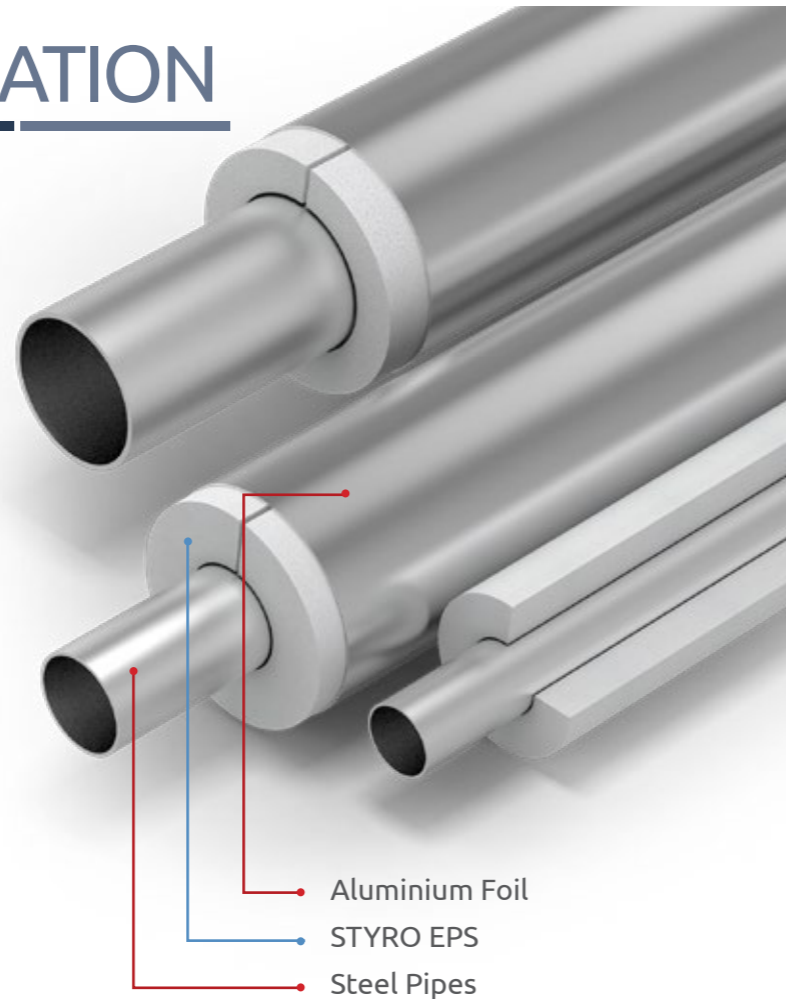
- Low Cost
- Lightweight
- High Thermal Insulation
- Flexible in Designs & Sizes

### Recommended Products:

- STYRO 290
- STYRO 380



SCAN FOR MORE INFO



- Aluminium Foil
- STYRO EPS
- Steel Pipes

STYRO APPLICATIONS

## STYRO PONTOONS & BUOYS

STYRO EPS is widely used as a core material to manufacture buoys, pontoons and floats as it is light in weight and has excellent buoyancy and resilience properties. Generally, there is no standard design, shape or pattern for buoys, pontoons and floats, rather, it is purely customized based on the nature of the application. If specifications demand, STYRO has the know-how to manufacture the buoys with a variety of core materials, coatings, extra fittings, handling accessories and finishing systems.

### Features:

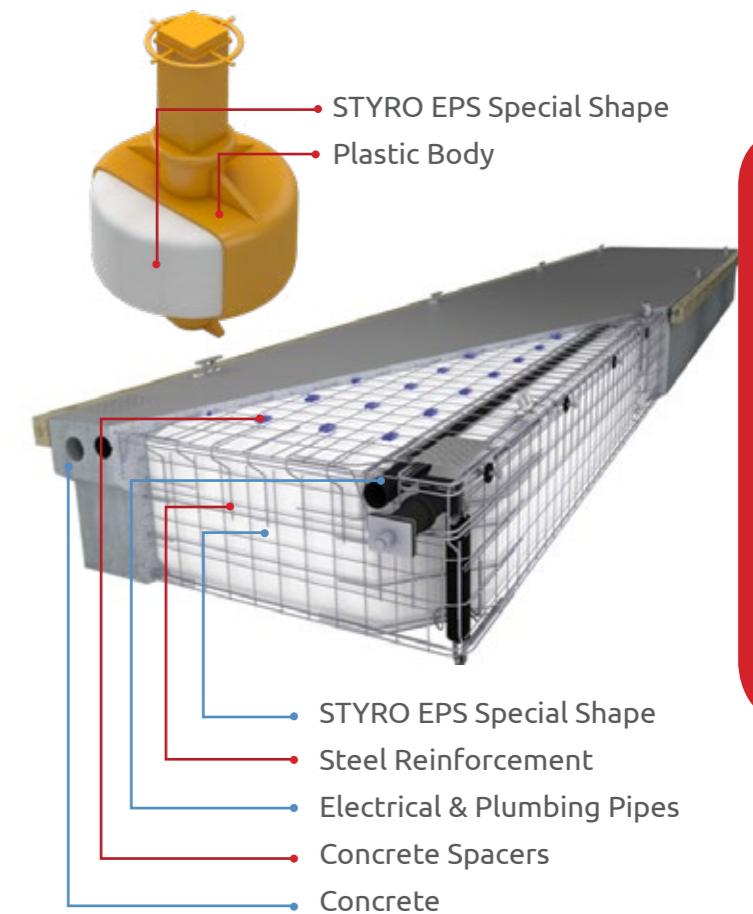
- Low Cost
- Lightweight
- Buoyant & Resilient
- Salt Water Resistant
- Flexible in Designs & Sizes

### Recommended Products:

- STYRO 180



SCAN FOR MORE INFO



- STYRO EPS Special Shape
- Plastic Body

- STYRO EPS Special Shape
- Steel Reinforcement
- Electrical & Plumbing Pipes
- Concrete Spacers
- Concrete

STYRO APPLICATIONS





## STYRO PILING CYLINDERS

### & Guide Walls

STYRO EPS cylinders are used as shore piling and guide walls in the construction industry for loose soil foundation. These cylinders can be made in any size and design using high-tech CAD/CAM cutting machines with good accuracy and consistency.

#### Features:

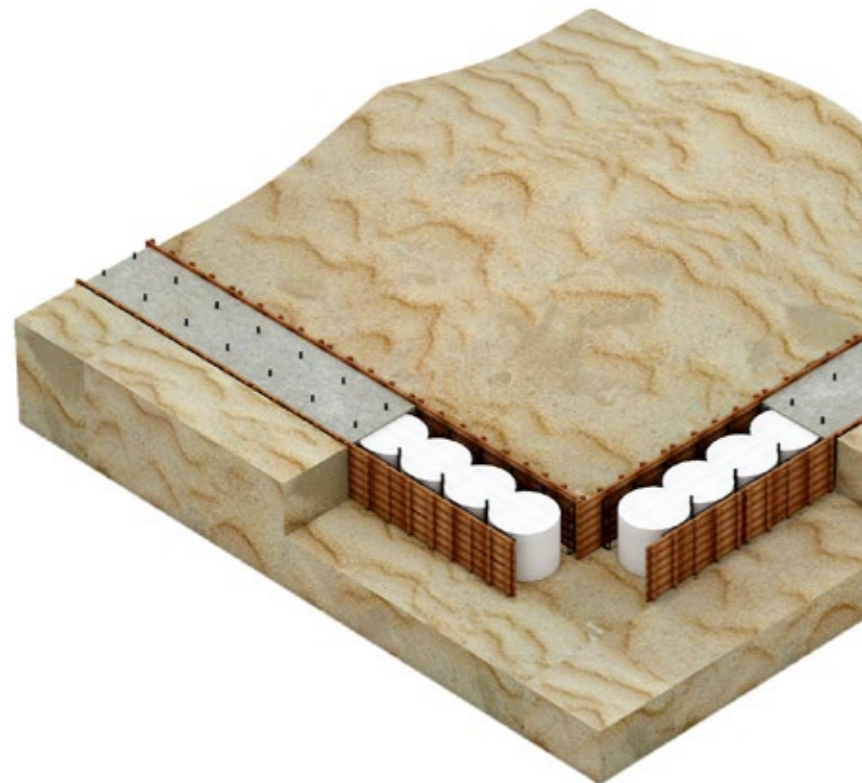
- Low Cost
- Lightweight
- Accuracy & Consistency
- Flexible in Design & Size

#### Recommended Products:

- STYRO 120
- STYRO 150



SCAN FOR MORE INFO



STYRO APPLICATIONS

STYRO APPLICATIONS

## STYRO BEADS

### for Lightweight Concrete

STYRO EPS beads are lightweight, white/gray colour, fire retardant and pearl-shaped. The diameter of the beads normally ranges from 3 to 12 mm with an apparent density of 8-15 Kg/m<sup>3</sup>. STYRO polystyrene beads are widely consumed by the ready-mix manufacturers for lightweight screed production, which has remarkable characteristics of thermal and acoustic properties used by the construction industries. Normally, EPS beads are mixed with concrete to increase its thermal rating and reduce its weight per cubic meter, which leads to a significant saving in structural cost.

#### Features:

- Cost Saving
- Lightweight
- High Resilience
- Excellent Sound & Acoustic Properties

#### Recommended Products:

- STYRO 150

Density	Compressive Strength		Flexural Strength		Elastic Modulus
	a/MPa Max.	Mean <sup>b</sup>	a/MPa Max.	Mean <sup>b</sup>	E/MPa
1/kg m <sup>3</sup>					
500	2.5	2.2	0.9	0.7	1.0x10 <sup>3</sup>
800	4.4	3.9	1.1	0.9	1.3x10 <sup>3</sup>
1000	8.3	5.9	1.5	1.5	2.9x10 <sup>3</sup>

- a) Measured in accordance with DIN 1048.  
 b) Typical for production from mixes formulated for minimum thickness.  
 c) In compression.



SCAN FOR MORE INFO





## STYRO CUSTOMIZED PACKAGING

STYRO produces all kinds of customized packaging products that suit all industrial needs. The customized packaging products have exceptional cushioning and thermal properties resulting in lower damage rates and maintaining a safe supply chain for all temperature-sensitive products.

STYRO materials achieve significant transport savings compared to other packaging materials due to their lighter weight, which results in lower fuel consumption.

Our EPS packing products can be produced and supplied at any size, thickness and shape.



Density:  
It can be produced from 8-50 Kgs/m<sup>3</sup>, special densities can be produced upon request.



## STYRO PACKING MATERIALS

STYRO packing material is the most suitable packaging for fragile items especially packages sent by air/sea. STYRO chips form a high resistance pad that envelops the object and protects it from shocks, sudden movements or sudden temperature changes. STYRO sheets are very light and can be packaged in boxes of all sizes.

EPS sheets can be cut and supplied at any size or thickness.

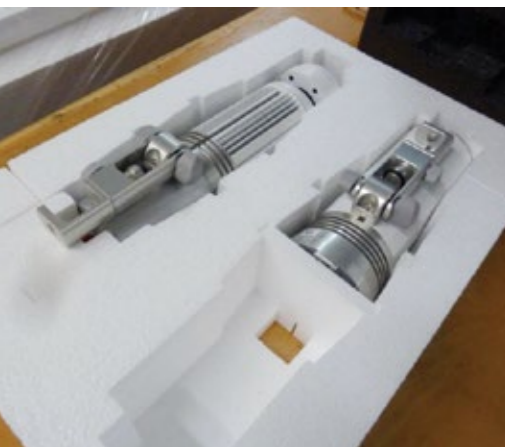


Density:  
It can be produced from 8-50 Kgs/m<sup>3</sup>, special densities can be produced upon request.



STYRO PACKING

STYRO PACKING



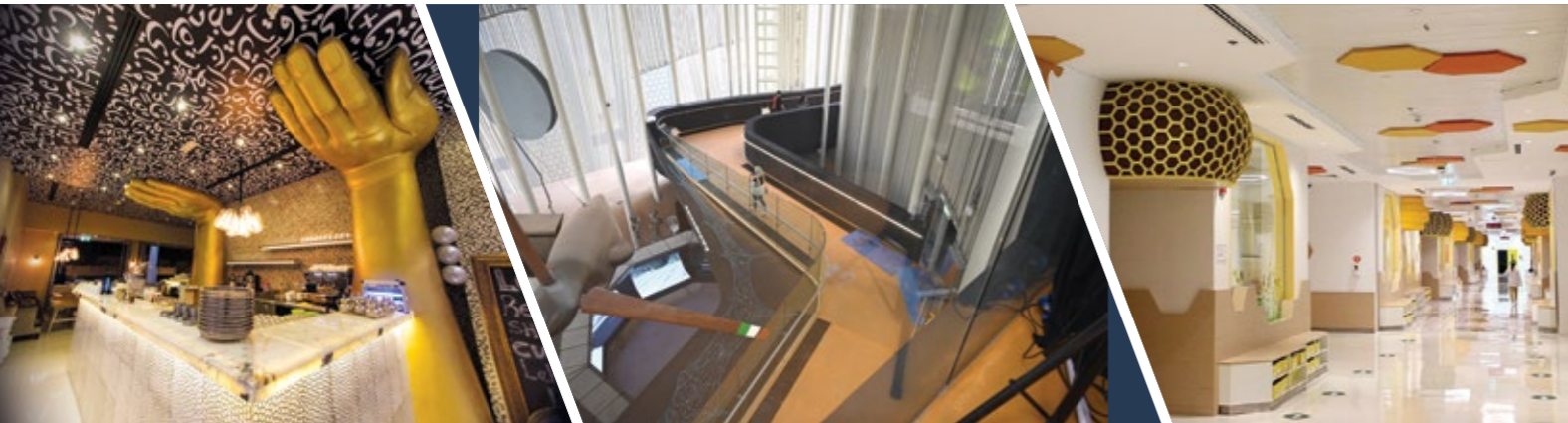
# STYRO CREATIVE & TECHNICAL SERVICES

Expanded Polystyrene is most commonly used in wall insulation but we at STYRO have gone a step ahead and unleashed the power of EPS in creative applications. It can be used to create stunningly beautiful artistic display structures.

Our creative team can bring any concept alive with the usage of Expanded Polystyrene and other components. Our exhaustive inventory of high-style event products makes us the leading decoration specialist in interior decoration, themed functions and events. By using the latest technology machines and 3D routers, we have harnessed the true potential of Expanded Polystyrene to shape, cut, scoop and profile all the projects requirements.



## INTERIOR DECORATION



## STYRO OUTDOOR DÉCOR



## CEILING DECORATION



## STYRO CREATIVE FOUNTAINS



## WALL DECORATION



## STYRO CREATIVE BACKDROPS





## STYRO SSS GLUE

SSS (SUPER STYRO STICK) is a polyurethane-based viscous glue, low volatile, nonsolvent based and water-resistant. It is specially formulated to bond Expanded Polystyrene products with any other material.

### Application:

- EPS to EPS
- Steel to Steel
- Steel to Wood
- Wood to Wood
- Steel to Concrete
- Concrete to Wood
- EPS to any Material
- Many more Applications...

### Features:

- Low Volatile Organic Compound (VOC)
- High Bonding Strength
- Fire Rated (FR) Grade  
(Tested as per ASTM E84 Standard)



SCAN FOR MORE INFO



## STYRO ONLINE SHOP

The lightweight nature of Expanded Polystyrene makes it an excellent choice to cut all kinds of shapes and models - they are easy to work with and are known for their long-life. We use latest technologies to craft models and a unique finishing system to deliver wonder to our clients. Our exclusive quality assurance team will monitor and work closely to ensure the required standards are met.

Think of any 3D shapes, geometrical structures like cones, pyramids, spheres, etc. regardless of its size, we at STYRO can make it come alive. We understand that different clients have their set of unique requirements and we promise to custom design shapes as per the client needs.



STYRO BALLS



STYRO CONES



STYRO SNOWFLAKES



STYRO DUMMY CAKES



STYRO HEARTS



STYRO STARS



STYRO CYLINDERS



STYRO SHEETS





SCAN FOR MORE INFO

STYRO TRADING PRODUCTS

STYRO ONLINE SHOP


**CALL NOW: 600 520 006**

 [www.styrouae.com](http://www.styrouae.com)

 [info@styrouae.com](mailto:info@styrouae.com)

**Abu Dhabi:**

P.O. Box: 9108 Abu Dhabi, UAE

 +971 2 551 3688


**Dubai:**

P.O. Box: 48562 Dubai, UAE

 +971 4 892 2814


**Sharjah:**

P.O. Box: 29272 Sharjah, UAE

 +971 6 534 4504

**Oman:**

P.O. Box: 1335 Muscat, Oman

 +968 2 412 4561



Send Your  
Inquiry