



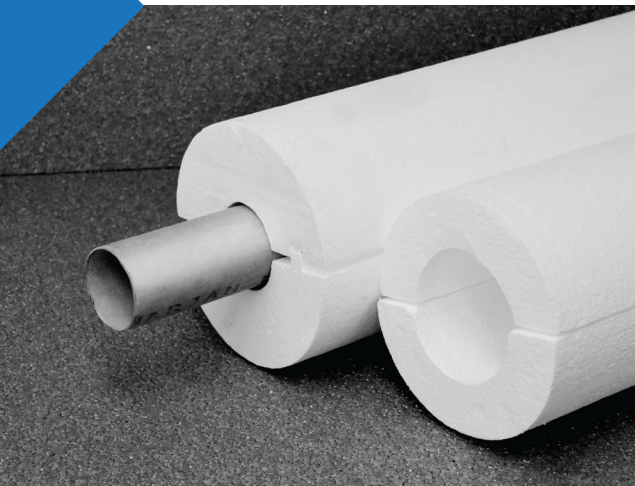
EXPANDED POLYSTYRENE SOLUTIONS

STYRO Pipe Insulation



STYRO Pipe Insulation sections are designed to fit snugly around the pipes and provide an insulating barrier that helps to prevent heat loss or gain. STYRO EPS commonly utilized as insulation for utility pipes in a variety of industries, including food, textile, chemical processing, HVAC and cold storage. The purpose of using STYRO EPS pipe sections is to minimize energy losses in utility piping caused by factors such as condensation, conduction and convection. It is available in varying thicknesses, with the minimum being 25 mm. Moreover it can be supplied in densities ranging from 12 to 48 kg/m³. However, for HVAC applications, the ideal recommended density is 32-35 kg/m³.

STYRO Pipe Insulation with facing is an essential component for HVAC applications. STYRO EPS pipe sections are used for this purpose and require a foil scrim kraft facing (FSK facing) to enhance their performance. The aluminium foil facing provides several benefits, including improved vapor permeability, fire resistance and aesthetic appearance. STYRO can supply either plain or stucco aluminium cladding based on the specification demands, which further enhances the EPS pipe section's performance.



Watch the Video

✓ Energy Saving:

STYRO Pipe Insulation prevents energy losses by insulating the chilled water pipes and ducts, as well as refrigerant pipes and other utility lines, which leads to reduced energy consumption and cost savings.

✓ Durable:

EPS pipe sections have a long lifespan, are resistant to mould, fungus infection and pests and are unaffected by bacteria, making them ideal for use in hygiene-sensitive areas like food processing facilities.

✓ Customizable:

It can be manufactured on a made-to-order basis to fit specific customer requirements. It can be cut into different shapes, sizes and thicknesses with high-tech CAD/CAM-CNC machines, and can also be wrapped with foil reinforced kraft paper for added protection.

✓ Easy Installation:

STYRO Pipe Insulation is lightweight and easy to handle, making it easy to install on-site. The two halves of the pipe sections are cut with shiplap joints and tongue in addition to groove arrangements, which simplifies the installation process.

✓ Cost Effective:

STYRO Pipe Insulation is a low-cost solution compared to other insulation materials, yet it provides excellent insulation properties and long-term savings on energy bills.

CALL NOW: 600 520 006

www.styrouae.com

info@styrouae.com



P.O.Box: 29272 - Sharjah, UAE
+971 6 534 4504

P.O.Box: 9108 - Abu Dhabi, UAE
+971 2 551 3688

P.O.Box: 48562 - Dubai, UAE
+971 4 892 2814