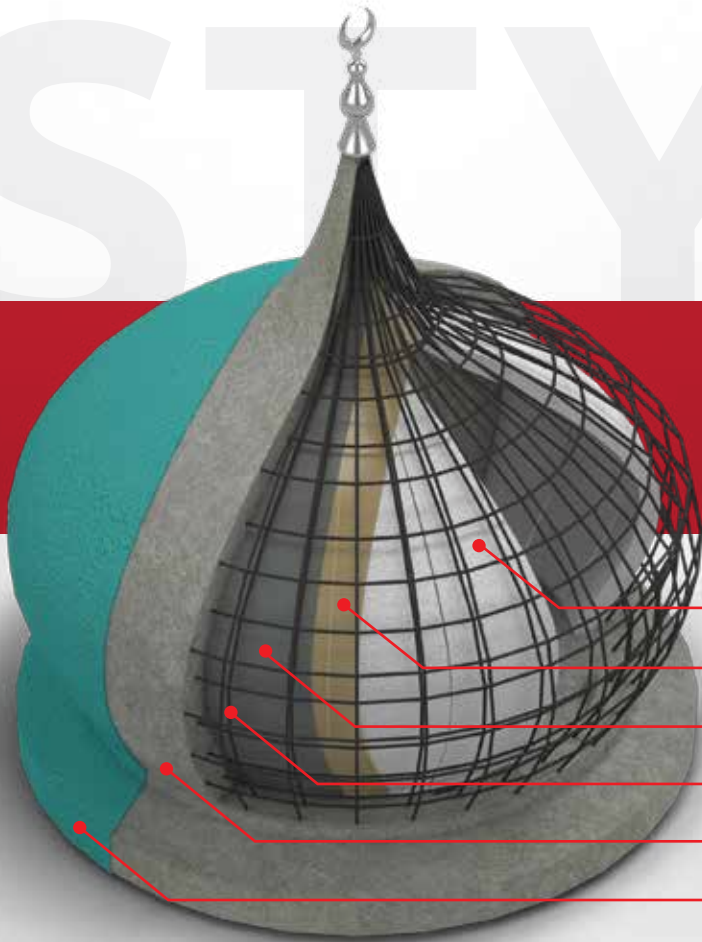




EXPANDED POLYSTYRENE SOLUTIONS

STYRO DOMES for Concrete Casting

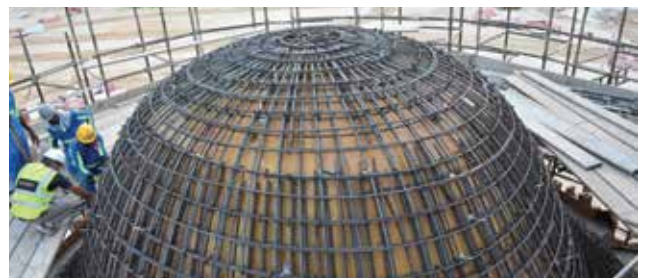


- STYRO Dome Mould
- Hard Coat (CPA)
- Epoxy Paint
- Steel Structure
- Concrete Casting
- Primer & Paint Finishing

STYRO Dome is used as a mould for concrete casting which became popular in all construction applications across the globe. STYRO Domes can be easily molded into any shape and size, this flexibility makes STYRO Products the ideal solution for wide range of construction and art projects.

ADVANTAGES:

- Flexible in Design
- Easy to install
- Light in weight
- Cost effective
- 100% recyclable
- Environment friendly
- Easy to dismantle



CALL NOW: 600520006

+9716-5344504

+9716-5344506

P.O.Box: 29272, Sharjah U.A.E.

info@styrouae.com

www.styrouae.com